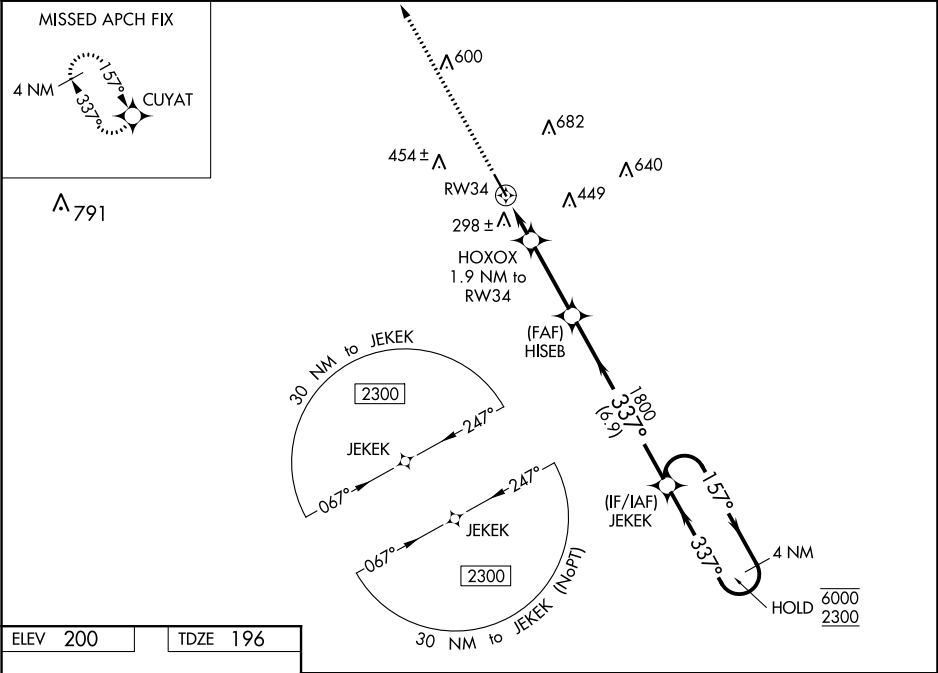


WAAS CH <b>70635</b> <b>W34A</b>	APP CRS <b>337°</b>	Rwy Idg TDZE Apt Elev	<b>5000</b> <b>196</b> <b>200</b>
--	------------------------	-----------------------------	---

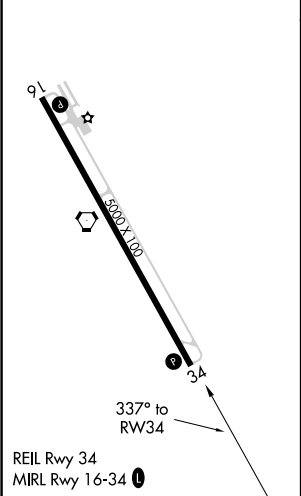
RNAV (GPS) RWY 34  
BACON COUNTY (AMG)

RNP APCH. ▼ Rwy 34 helicopter visibility reduction below ¾ SM NA. ▲ For uncompensated Baro-VNAV systems, LNAV/VNAV NA below -4°C or above 54°C.	MISSED APPROACH: Climb to 2300 direct CUYAT and hold.
---	---

ASOS <b>118.325</b>	JACKSONVILLE CENTER <b>127.575 269.025</b>	UNICOM <b>122.7 (CTAF) 0</b>
------------------------	---	---------------------------------



ELEV <b>200</b>	TDZE <b>196</b>
-----------------	-----------------



2300	CUYAT	VGSI and RNAV glidepath not coincident (VGSI Angle 3.00°/TCH 30°).			
*LNAV only		HOXOX 1.9 NM to RW34	HISEB 1800	JEKEK	4 NM Holding Pattern
*1.1 NM to RW34		1800	157° → 6000	← 337° 2300	GP 3.00° TCH 40
RW34		820*	337°	1800	
1.1 0.8 3.1 NM 6.9 NM					
CATEGORY	A	B	C	D	
LPV DA	452-¾		256 (300-¾)		
LNAV/VNAV DA	459-⅞		263 (300-⅞)		
LNAV MDA	560-1		364 (400-1)		
CIRCLING	720-1	520 (600-1)	1000-2¼ 800 (800-2¼)	1000-2½ 800 (800-2½)	