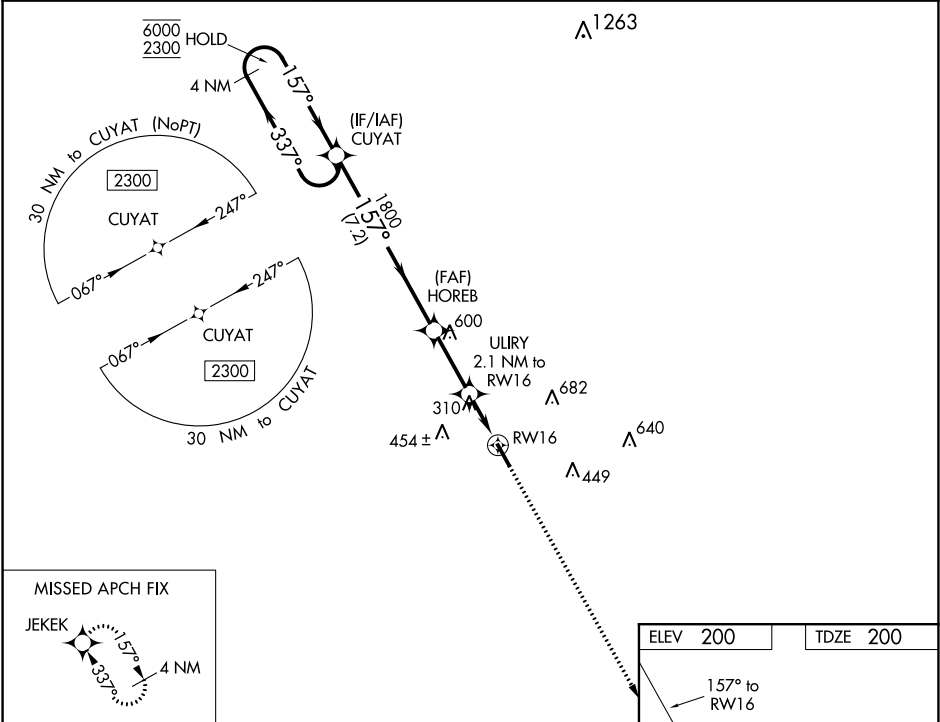


WAAS CH 45537 W16A	APP CRS 157°	Rwy Idg TDZE Apt Elev	5000 200 200
--	------------------------	-----------------------------	---

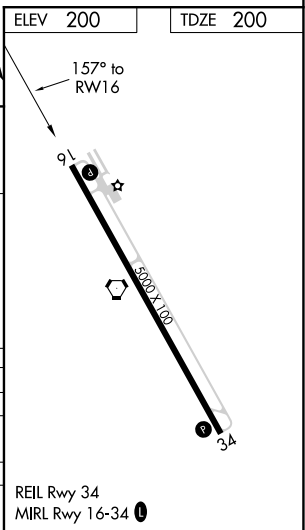
RNAV (GPS) RWY 16
BACON COUNTY (AMG)

RNP APCH.	MISSED APPROACH: Climb to 2300 direct to JEKEK and hold.
<div><div>▼</div><div>▲</div></div> Rwy 16 helicopter visibility reduction below ¾ SM NA. For uncompensated Baro-VNAV systems, LNAV/VNAV NA below -4°C or above 54°C.	

ASOS 118.325	JACKSONVILLE CENTER 127.575 269.025	UNICOM 122.7 (CTAF) 0
------------------------	---	---------------------------------



4 NM Holding Pattern		VGSI and RNAV glidepath not coincident (VGSI Angle 3.00/TCH 40).		2300	JEKEK
CUYAT		HOREB		ULIRY	
6000		1800		2.1 NM to RW16	
2300		1800		*1 NM to RW16	
GP 3.10°		*940		RW16	
TCH 55		7.2 NM		2.6 NM	
		1.1 NM		1 NM	
CATEGORY	A	B	C	D	
LPV DA		461-7/8	261 (300-7/8)		
LNAV/VNAV DA		468-7/8	268 (300-7/8)		
LNAV MDA		560-1	360 (400-1)		
CIRCLING	720-1	520 (600-1)	1000-2 ¼ 800 (800-2 ¼)	1000-2 ½ 800 (800-2 ½)	



SE-4, 03 DEC 2020 to 31 DEC 2020

SE-4, 03 DEC 2020 to 31 DEC 2020