

INVERNESS, FLORIDA

AL-10673 (FAA)

20310

APP CRS <b>191°</b>	Rwy Idg TDZE Apt Elev	<b>5000</b> <b>54</b> <b>65</b>
------------------------	-----------------------------	---------------------------------------

RNAV (GPS) RWY 19  
INVERNESS (INF)

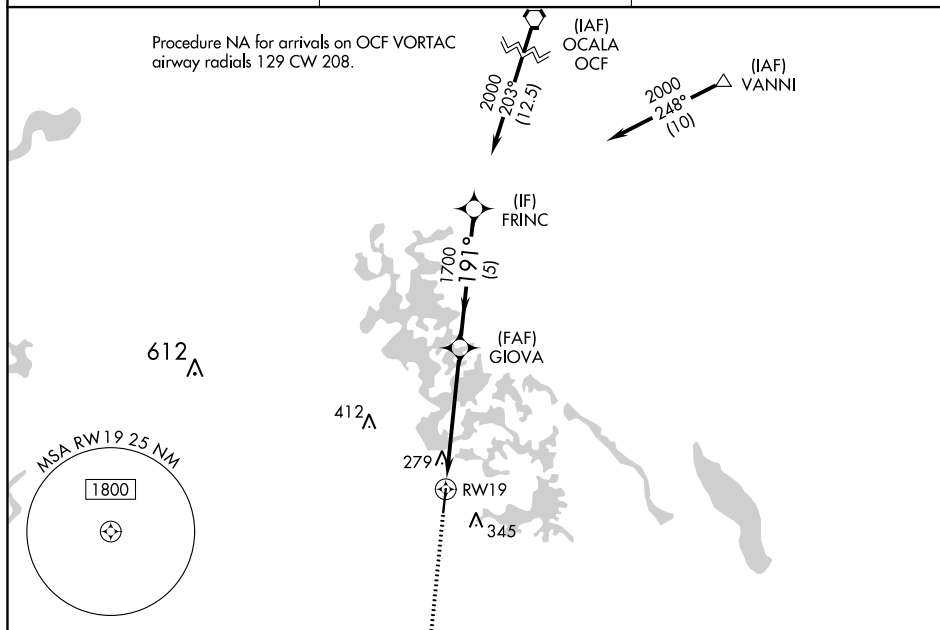
RNP APCH.

**T**  
**A**

Rwy 19 helicopter visibility reduction below 1 SM NA.

**MISSED APPROACH:** Climb to 2000 direct BOWSK and on track 176° to REBEC and hold.

AWOS-3 <b>119.975</b>	JACKSONVILLE APP CON <b>118.6 251.15</b>	UNICOM <b>122.725 (CTAF) 0</b>
--------------------------	---	-----------------------------------



CATEGORY	A		B	C	D
LNAV MDA	580-1	526 (600-1)		580-1½ 526 (600-1½)	NA
CIRCLING	660-1	595 (600-1)		660-1½ 595 (600-1½)	NA

INVERNESS, FLORIDA

Orig-B 16AUG18

28°48'N-82°19'W

INVERNESS (INF)

RNAV (GPS) RWY 19

SE-3, 03 DEC 2020 to 31 DEC 2020