

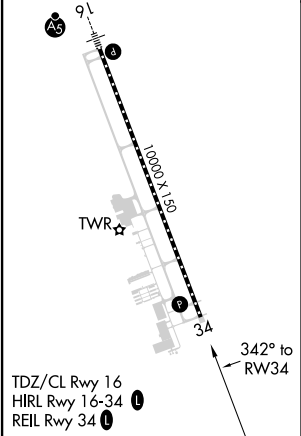
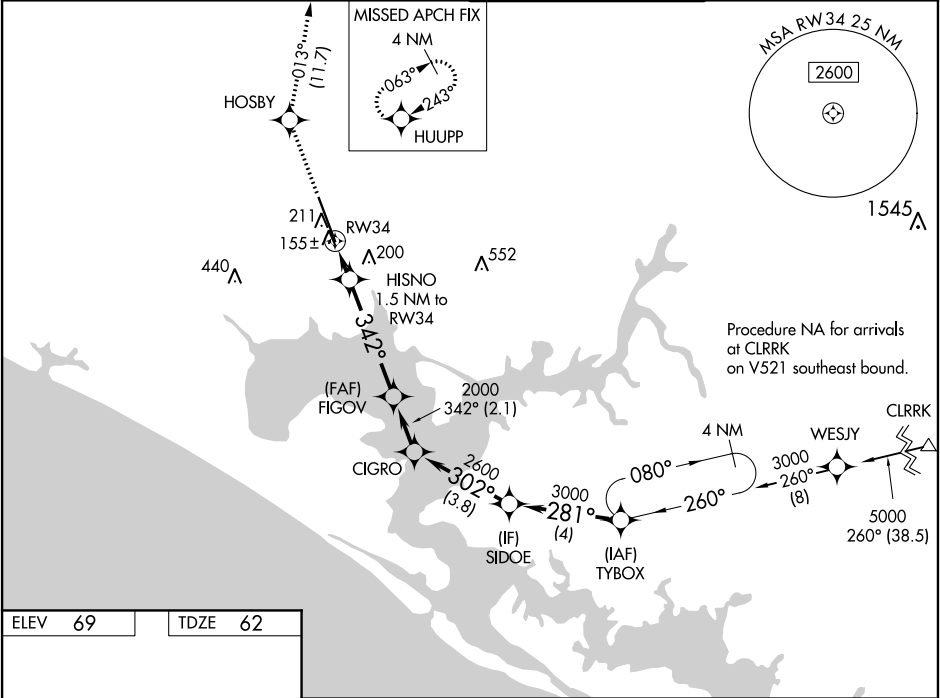
WAAS CH 93817 W34A	APP CRS 342°	Rwy Idg 10000 TDZE 62 Apt Elev 69
--	------------------------	--

RNAV (GPS) RWY 34
NORTHWEST FLORIDA BEACHES INTL (ECP)

⚠ For uncompensated Baro-VNAV systems, LNAV/VNAV NA below -15°C (5°F) or above 54°C (130°F). DME/DME RNP-0.3 NA. When local altimeter setting not received, use Destin altimeter setting and increase all DA 88 feet, increase all MDA 100 feet, increase LPV all Cats visibility 1/8 mile, increase LNAV/VNAV all Cats visibility 3/8 mile, and increase LNAV Cat C and D visibility 3/8 mile. Baro-VNAV and VDP NA with Destin altimeter setting.

MISSED APPROACH: Climb to 4000 direct HOSBY and on track 013° to HUUPP and hold, continue climb-in-hold to 4000.

ATIS 119.975	TYNDALL APP CON★ 125.2 (N above 5000')	PANAMA CITY TOWER★ 118.95 (CTAF) 0	GND CON 121.65
------------------------	--	---	--------------------------



4000	HOSBY	tr 013°	HUUPP	VGSI and RNAV glidepath not coincident (VGSI Angle 3.00/TCH 73).			
*LNAV only.				HISNO 1.5 NM to RW34	FIGOV 2000	CIGRO	SIDOE
*0.9 NM to RW34							
RW34							
*580					2000	2600	3000
0.9				0.6	4.4 NM	2.1 NM	3.8 NM
CATEGORY				A	B	C	D
LPV DA				262-3/4 200 (200-3/4)			
LNAV/VNAV DA				344-7/8 282 (300-7/8)			
LNAV MDA				420-1 358 (400-1)			
CIRCLING				520-1	451 (500-1)	520-1 1/2 451 (500-1 1/2)	620-2 551 (600-2)

SE-3, 03 DEC 2020 to 31 DEC 2020

SE-3, 03 DEC 2020 to 31 DEC 2020