

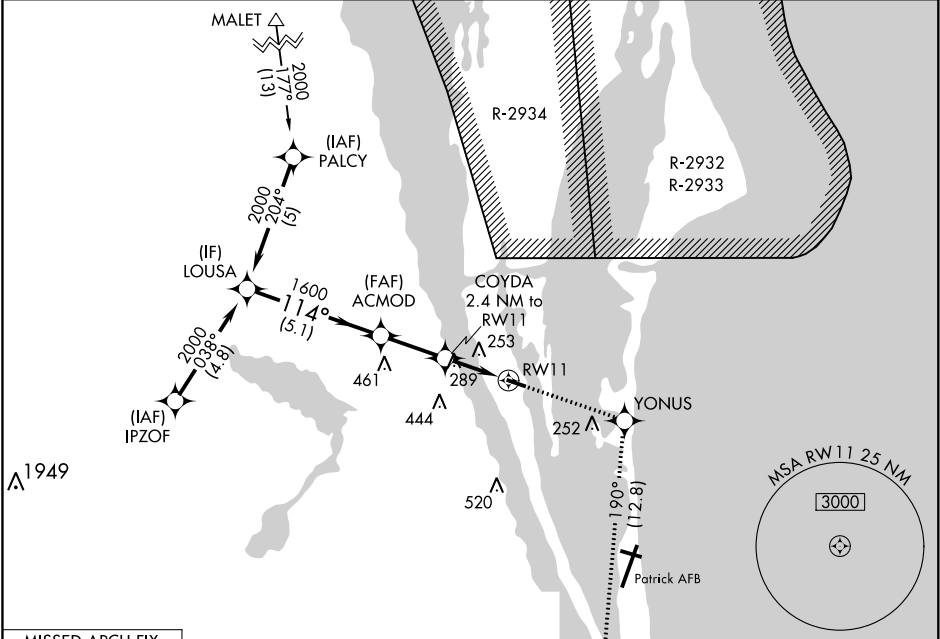
WAAS CH 65899 W11A	APP CRS 114°	Rwy Idg TDZE Apt Elev	3601 6 6
--	------------------------	-----------------------------	-------------------------------------

RNAV (GPS) RWY 11

MERRITT ISLAND (COI)

RNP APCH.	MISSED APPROACH: Climb to 3000 direct YONUS and on track 190° to MLB VOR/DME and hold.
▼ Rwy 11 helicopter visibility reduction below 1 SM NA. When local altimeter setting not received, use Melbourne altimeter setting and increase LPV DA to 329 and all MDA 40 feet, increase LPV all Cats visibility 1/8 mile. Night landing: Rwy 11 NA.	

AWOS-3 119.025	ORLANDO APP CON 134.95 281.425	UNICOM 122.975 (CTAF) 0
--------------------------	--	-----------------------------------



MISSED APCH FIX

MELBOURNE
MLB

5 NM

198°

118°

Procedure NA for arrivals
on MLB VORTAC airway
radials 276 CW 329.

VGSI and RNAV glidepath not coincident
(VGSI Angle 3.00/TCH 30).

LOUSA

2000

114°

GP 3.00°
TCH 33

5.1 NM

ACMOD

1600

COYDA

2.4 NM to
RW11

*RNAV only.

RW11

2.4 NM

2.4 NM

3000

YONUS

tr 190°

MLB

2100

31°

20.1

114° to
RW11

3601 X 75

2

CATEGORY	A	B	C	D
LPV DA	291-1	285 (300-1)	NA	
LNNAV MDA	600-1	594 (600-1)	NA	
CIRCLING	600-1 594 (600-1)	620-1 614 (700-1)	NA	

MERRITT ISLAND, FLORIDA

MERRITT ISLAND (COI)

MRL Rwy 11-29 0