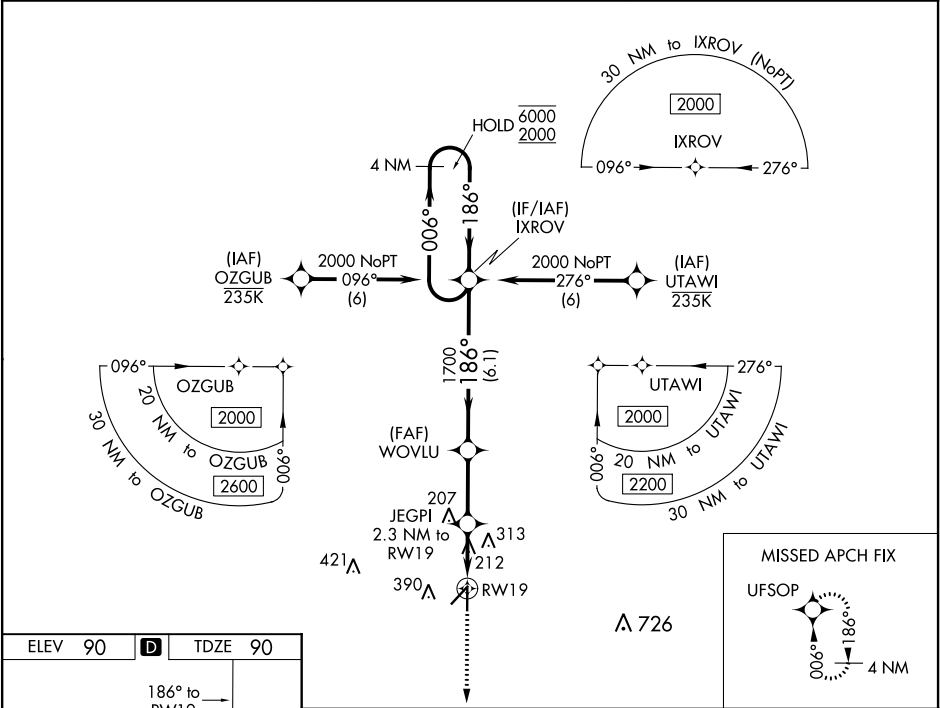


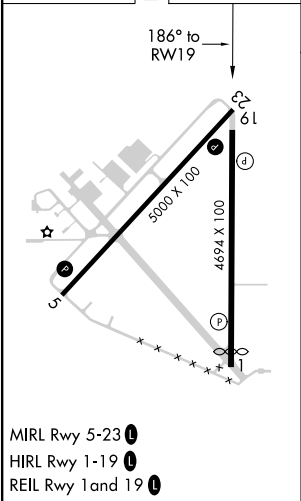
WAAS CH 78436 W19A	APP CRS 186°	Rwy Idg TDZE 90 Apt Elev 90	4694
--	------------------------	---	-------------

RNAV (GPS) RWY 19
ZEPHYRHILLS MUNI (ZPH)

RNP APCH. ▼ For uncompensated Baro-VNAV systems, LNAV/VNAV NA below 15°C or above 54°C. ▲ MISSED APPROACH: Climb to 2000 direct UFSOP and hold.		AWOS-3PT 118.975	TAMPA APP CON 119.9 290.3	UNICOM 123.075 (CTAF) 0
---	--	----------------------------	-------------------------------------	-----------------------------------



ELEV 90	D	TDZE 90
---------	----------	---------



MIRL Rwy 5-23
HIRL Rwy 1-19
REIL Rwy 1 and 19

2000 ↑		UFSOP 		VGSi and RNAV glidepath not coincident (VGSi Angle 3.00/TCH 43).				IXROV 4 NM Holding Pattern	
*LNAV only.		JEGPI 2.3 NM to RW19		WOVLU 1700		006° → 6000 ← 186° 2000		GP 3.00° TCH 40	
		*1.1 NM to RW19		1700		186°			
RW19		RW19		860*		1700			
1.1 NM		1.2 NM		2.6 NM		6.1 NM			
CATEGORY	A			B		C		D	
LPV DA	340-7/8			250 (300-7/8)					
LNAV/VNAV DA	380-1			290 (300-1)					
LNAV MDA	480-1		390 (400-1)		480-1 1/8		390 (400-1 1/8)		
CIRCLING	740-1		650 (700-1)		740-1 3/4 650 (700-1 3/4)		740-2 650 (700-2)		

SE-3, 03 DEC 2020 to 31 DEC 2020

SE-3, 03 DEC 2020 to 31 DEC 2020