

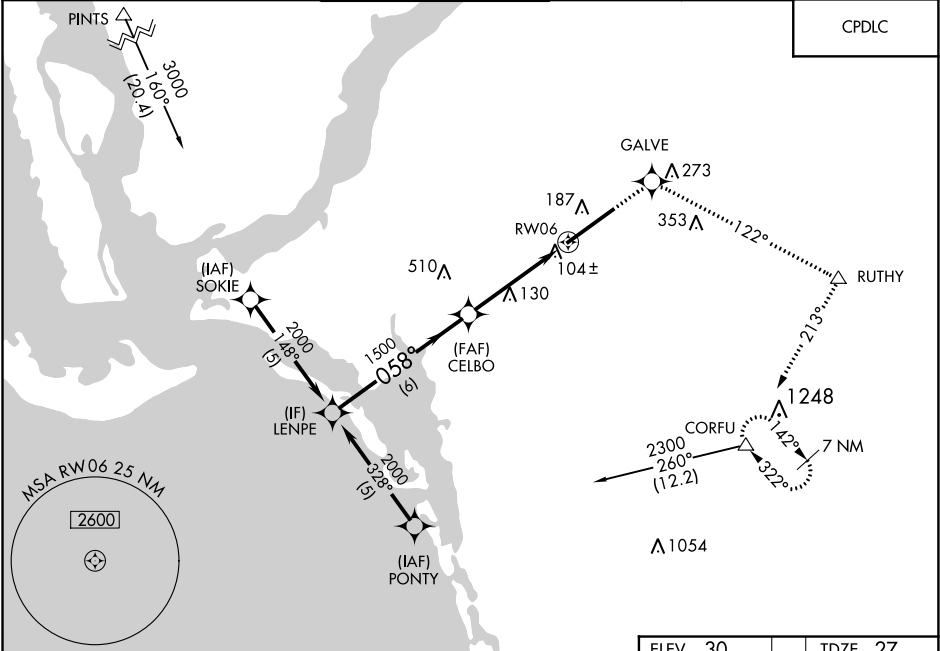


WAAS CH 65619 W06A	APP CRS 058°	Rwy Idg 12000 TDZE 27 Apt Elev 30
--	------------------------	--

RNAV (GPS) RWY 6
SOUTHWEST FLORIDA INTL (RSW)

 For uncompensated Baro-VNAV systems, LNAV/VNAV NA below -15°C (5°F) or above 48°C (118°F). DME/DME RNP-0.3 NA. For inoperative MALSR increase LPV all Cats visibility to RVR 5000, and LNAV Cat D visibility to RVR 6000.	MALSR 	MISSED APPROACH: Climb to 2300 direct GALVE and via 122° track to RUTHY and right turn via 213° track to CORFU and hold.
---	--	--

D-ATIS 124.65	FORT MYERS APP CON★ 126.8 306.2	FORT MYERS TOWER★ 128.75 (CTAF) 0 257.8	GND CON 121.9 257.8	CLNC DEL 132.075	UNICOM 122.95
-------------------------	---	---	-------------------------------	----------------------------	-------------------------



Procedure Turn NA		2300	GALVE	tr 122°	RUTHY	tr 213°	CORFU
LENPE		2000	058°	1500	CELBO	1.1 NM to RW06	RW06
GP 3.00° TCH 55		6 NM	3.3 NM	1.1 NM			
CATEGORY	A	B	C	D			
LPV DA	330/24		303 (300-½)				
LNAV/VNAV DA	380/40		353 (400-¾)				
LNAV MDA	440/24	413 (500-½)	440/40	413 (500-¾)	440/50		
CIRCLING	500-1	470 (500-1)	500-1½	470 (500-1½)	580-2		

REIL Rwy 24
TDZ/CL Rwy 6
HIRL Rwy 6-24