

WAAS CH 70319 W24A	APP CRS 238°	Rwy ldg 12000 TDZE 30 Apt Elev 30
--	------------------------	--

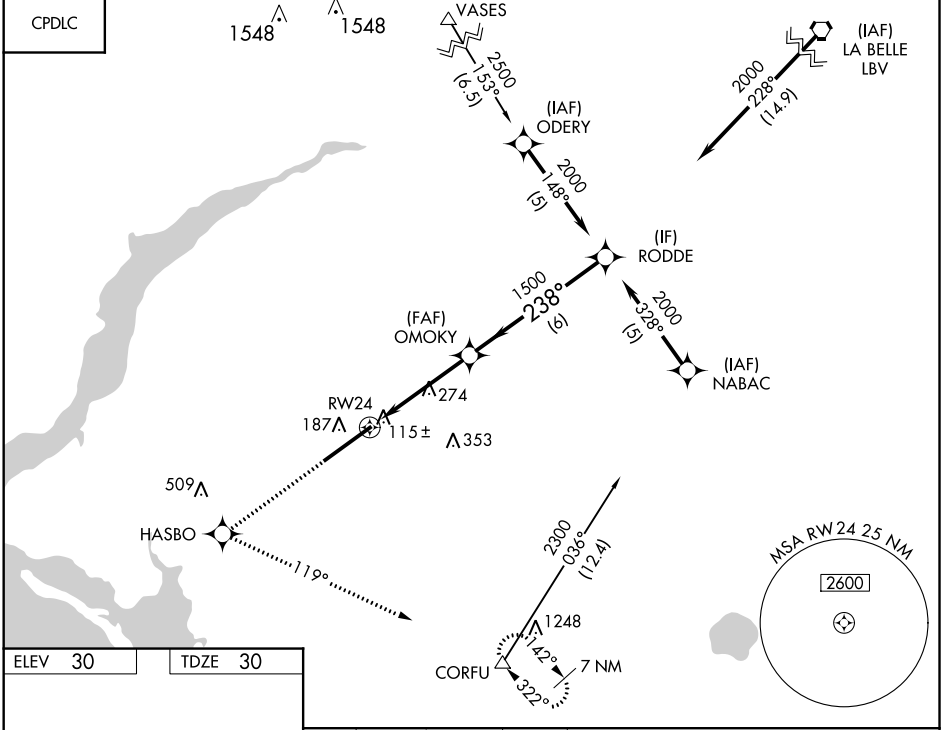
RNAV (GPS) RWY 24

SOUTHWEST FLORIDA INTL (RSW)

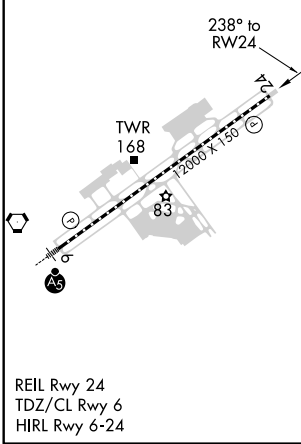
For uncompensated Baro-VNAV systems, LNAV/VNAV NA below -15°C (5°F) or above 48°C (118°F).
DME/DME RNP-0.3 NA.

MISSED APPROACH: Climb to 2300 direct HASBO and left turn via 119° track to CORFU and hold.

D-ATIS 124.65	FORT MYERS APP CON ★ 126.8 306.2	FORT MYERS TOWER ★ 128.75 (CTAF) 0 257.8	GND CON 121.9 257.8	CLNC DEL 132.075	UNICOM 122.95
-------------------------	--	--	-------------------------------	----------------------------	-------------------------



ELEV 30	TDZE 30
---------	---------



2300		HASBO		CORFU		RODDE	
		tr 119°					
VGSi and RNAV glidepath not coincident (VGSi Angle 3.00°/TCH 72).				OMOKY		2000	
						Procedure Turn NA	
						GP 3.00° TCH 52	
CATEGORY		A		B		C	
LPV DA				280-3/4 250 (300-3/4)			
LNAV/VNAV DA				420-1 1/4 390 (400-1 1/4)			
LNAV MDA		580-1 550 (600-1)		580-1 1/2 550 (600-1 1/2)		580-1 3/4 550 (600-1 3/4)	
CIRCLING		580-1 550 (600-1)		580-1 1/2 550 (600-1 1/2)		580-2 550 (600-2)	