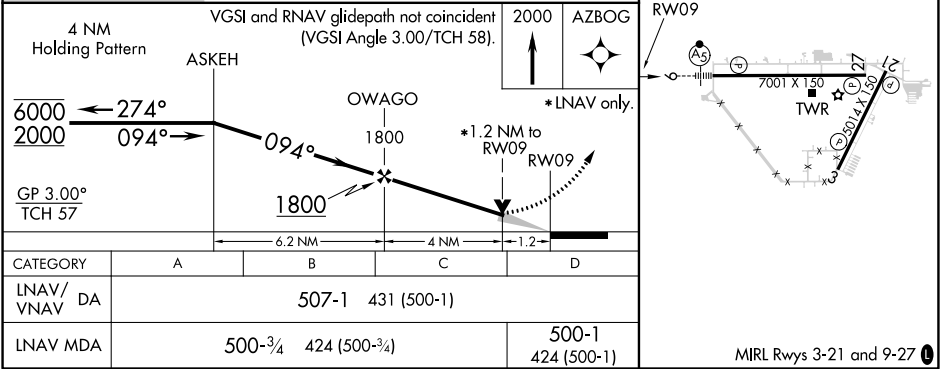
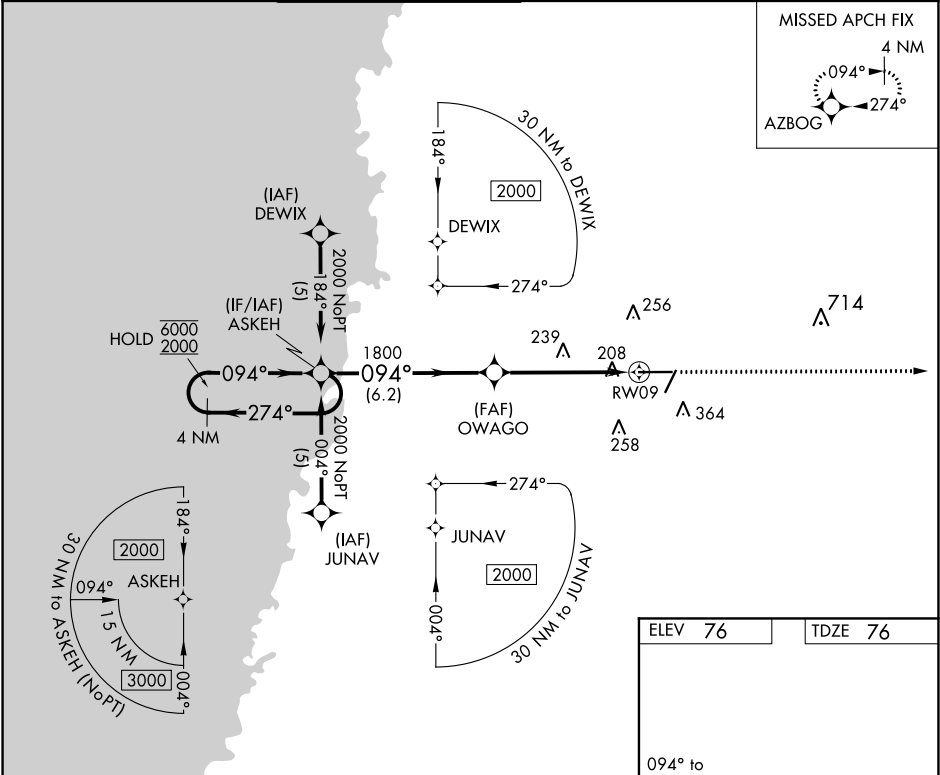


APP CRS	Rwy Idg	<b>7001</b>
<b>094°</b>	TDZE	<b>76</b>
	Apt Elev	<b>76</b>

**RNAV (GPS) RWY 9**  
BROOKSVILLE-TAMPA BAY RGNL (BKV)

RNP APCH.		MALSR	MISSED APPROACH: Climb to 2000 direct AZBOG and hold.
▼ For uncompensated Baro-VNAV systems, LNAV/VNAV NA below -15°C or above 48°C. ▲ For inop ALS increase LNAV Cat D visibility to 1¼ SM.		AS	

ASOS <b>134.725</b>	TAMPA APP CON <b>125.3 316.05</b>	BROOKSVILLE TOWER ★ <b>118.55 (CTAF) 0</b>	GND CON <b>121.4</b>	CLNC DEL <b>119.125</b>	UNICOM <b>123.0</b>
------------------------	--------------------------------------	---	-------------------------	----------------------------	------------------------



SE-3, 03 DEC 2020 to 31 DEC 2020

SE-3, 03 DEC 2020 to 31 DEC 2020