

WAAS
CH **48807**
W04A

APP CRS
035°

Rwy Idg
TDZE
Apt Elev
7193
24
26

RNAV (GPS) RWY 4

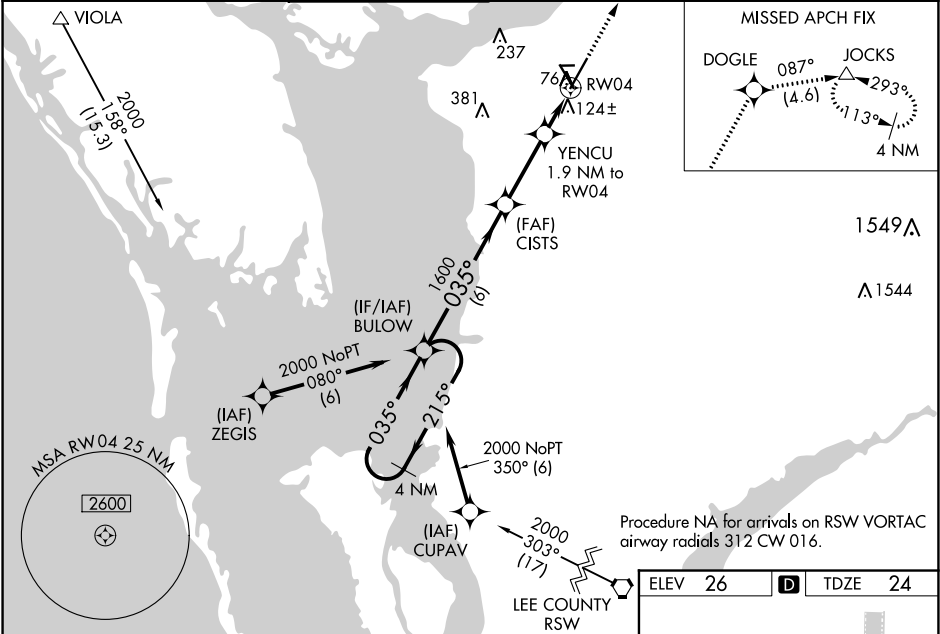
PUNTA GORDA (PGD)

RNP APCH

When local altimeter setting not received, use Page Field altimeter setting and increase LPV DA to 274 feet, LNAV/VNAV DA to 443 feet, and all MDA 60 feet; increase LNAV/VNAV all Cats visibility ¼ SM, LNAV Cats C and D visibility ¼ SM, and Circling Cats C and D visibility ¼ SM. For uncompensated Baro-VNAV systems, LNAV/VNAV NA below 0°C or above 54°C.

MISSED APPROACH: Climb to 2000 direct DOGLE and track 087° to JOCKS and hold.

ASOS 135.675	FORT MYERS APP CON ★ 127.05 306.2	PUNTA GORDA TOWER ★ 121.0 (CTAF) 0	GND CON 119.55	CLNC DEL 119.55	CLNC DEL 127.05 (When twr closed)	UNICOM 122.975
------------------------	---	--	--------------------------	---------------------------	--	--------------------------



4 NM Holding Pattern BULOW

2000 215° 035°

GP 3.00° TCH 50

6 NM 2.9 NM 0.9 NM 1 NM

CATEGORY A B C D

LPV DA 224-¾ 200 (200-¾)

LNAV/VNAV DA 393-1 369 (400-1)

LNAV MDA 400-1 376 (400-1)

CIRCLING 460-1 580-1 600-1½ 740-2¼
434 (500-1) 554 (600-1) 574 (600-1½) 714 (800-2¼)

2000 DOGLE JOCKS

YENCU 1.9 NM to RW04

*1 NM to RW04

*LNAV only.

RW04

26 24

ELEV TDZE

510 2636 X 60 27 5688 X 150 7193 X 150 33 035° to RW04

HIRL Rwy 4-22
MIRL Rwy 15-33
REIL Rws 4, 15, 22 and 33