

WAAS CH <b>93507</b> <b>W33A</b>	APP CRS <b>335°</b>	Rwy Idg <b>5127</b> TDZE <b>23</b> Apt Elev <b>26</b>
--	------------------------	---

RNAV (GPS) RWY 33  
PUNTA GORDA (PGD)

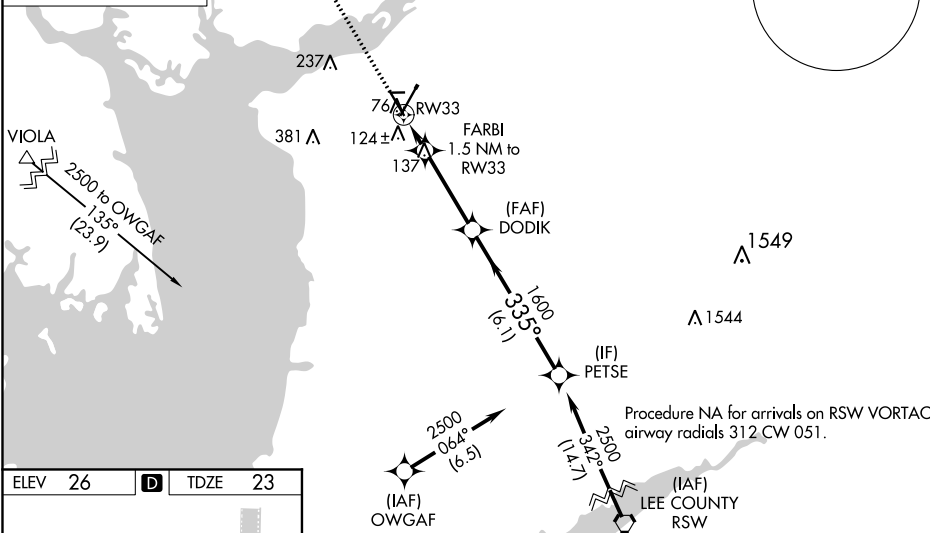
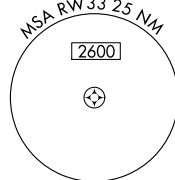
RNP APCH.

**A** For uncompensated Baro-VNAV systems, LNAV/VNAV NA below 0°C or above 54°C. When local altimeter setting not received, use Page Field altimeter setting and increase LPV DA to 323 and all visibilities  $\frac{1}{8}$  SM, LNAV/VNAV DA to 443 and all visibilities  $\frac{1}{8}$  SM, and all MDAs 60 feet; increase LNAV Cats C and D visibility  $\frac{1}{8}$  SM, and Circling Cats C and D visibility  $\frac{1}{2}$  SM. Baro-VNAV NA when using Page Field altimeter setting.

**MISSED APPROACH:** Climb to 2000 direct APZUL and hold.

ASOS <b>135.675</b>	FORT MYERS APP CON ★ <b>127.05 306.2</b>	PUNTA GORDA TOWER ★ <b>121.0 (CTAF) 0</b>	GND CON <b>119.55</b>	CLNC DEL <b>119.55</b>	CLNC DEL <b>127.05</b> (When twr closed)	UNICOM <b>122.975</b>
------------------------	---	--	--------------------------	---------------------------	--	--------------------------

MISSED APCH FIX



HIRL Rwy 4-22 **L**  
 MIRL Rwy 15-33 **L**  
 REIL Rwy 4, 15, 22 and 33 **L**

