

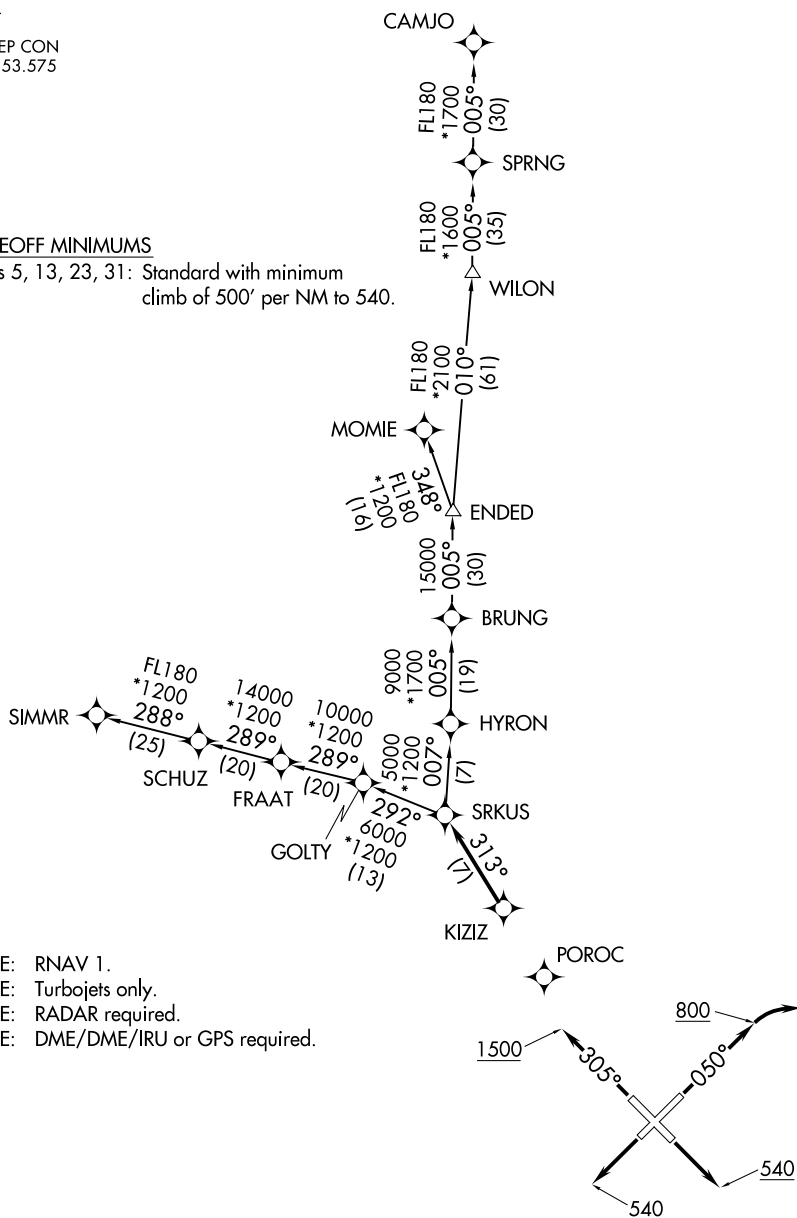
VENICE MUNI (VNC)
VENICE, FLORIDA

SRKUS FOUR DEPARTURE (RNAV)

AWOS-3
119.275
CLNC DEL
118.25
TAMPA DEP CON
119.65 353 575

TAKEOFF MINIMUMS

Rwys 5, 13, 23, 31: Standard with minimum climb of 500' per NM to 540.



NOTE: RNAV 1.
NOTE: Turbojets only.
NOTE: RADAR required.
NOTE: DME/DME/IRU or GPS required.

NOTE: Chart not to scale.

(NARRATIVE ON FOLLOWING PAGE)

SRKUS FOUR DEPARTURE (RNAV)

(SRKUS4.SRKUS) 03JAN19

VENICE, FLORIDA
VENICE MUNI (VNC)

SE-3, 03 DEC 2020 to 31 DEC 2020