

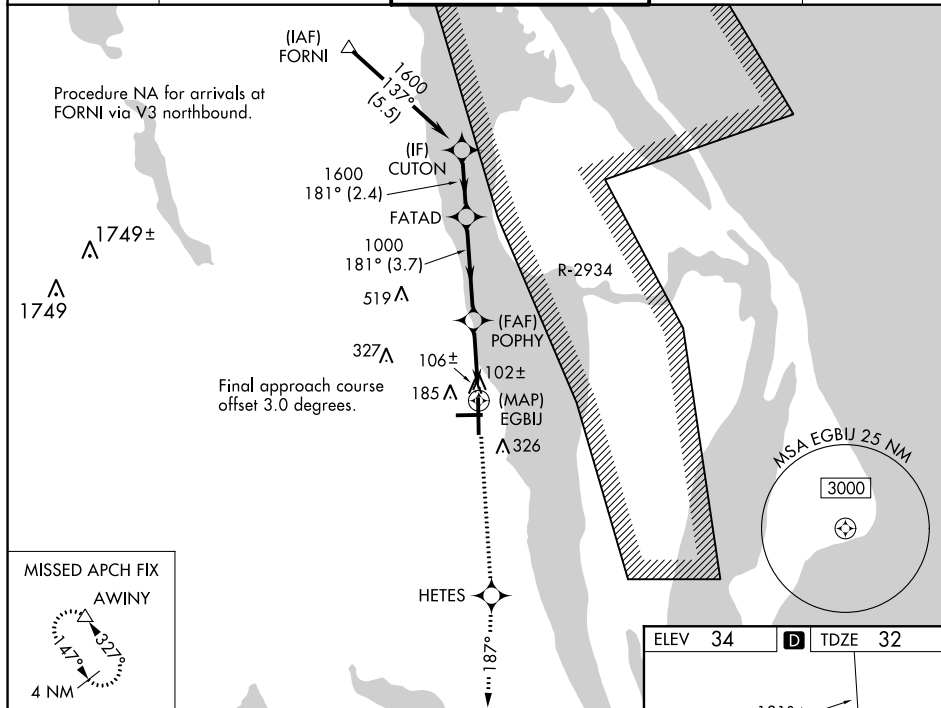
WAAS CH <b>56612</b> <b>W18B</b>	APP CRS <b>181°</b>	Rwy Idg <b>6930</b> TDZE <b>32</b> Apt Elev <b>34</b>
--	------------------------	---

RNAV (GPS) Z RWY 18  
SPACE COAST RGNL (TIX)

**T** Baro-VNAV NA when using Melbourne altimeter setting. For uncompensated Baro-VNAV systems, LNAV/VNAV NA below -15°C (5°F) or above 47°C (116°F). DME/DME RNP-0.3 NA. Visibility reduction by helicopters NA. When control tower closed, use Melbourne altimeter setting.

**MISSED APPROACH:** Climb to 3000 direct HETES and via track 187° to AWINY and hold.

ATIS <b>120.625</b>	ORLANDO APP CON <b>134.95 281.425</b>	SPACE COAST TOWER ★ <b>118.9 (CTAF) 0</b>	GND CON <b>121.85</b>	UNICOM <b>122.95</b>
------------------------	--	--	--------------------------	-------------------------



SE-3, 03 DEC 2020 to 31 DEC 2020

		VGSi and RNAV glidepath not coincident (VGSi Angle 3.00/TCH 44).				
Procedure	CUTON	FATAD	3000 ↑	HETES ✦	tr 187° ↗	AWINY △
Turn NA	1600	1600		POPHY		EGBIJ
GP 3.00° TCH 50	181°	187°		1000		
	2.4 NM	3.7 NM		2.9 NM		
CATEGORY	A	B	C	D		
LPV DA	332-1		300 (300-1)			
RNAV/ VNAV DA	377-1¼		345 (400-1¼)			
MELBOURNE ALTIMETER SETTING MINIMUMS						
RNAV/ VNAV DA	437-1½		405 (500-1½)			

