

WAAS CH <b>70704</b> <b>W32A</b>	APP CRS <b>318°</b>	Rwy Idg TDZE <b>20</b> Apt Elev <b>20</b>	<b>5425</b>
----------------------------------------	------------------------	-------------------------------------------------	-------------

RNAV (GPS) RWY 32

APALACHICOLA RGNL-CLEVE RANDOLPH FIELD (AAF)

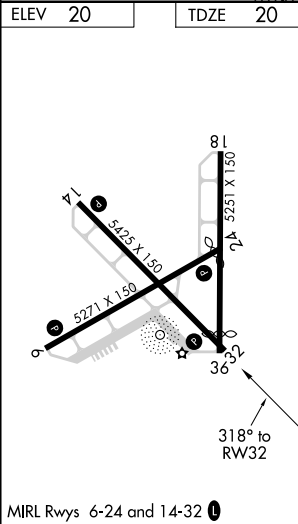
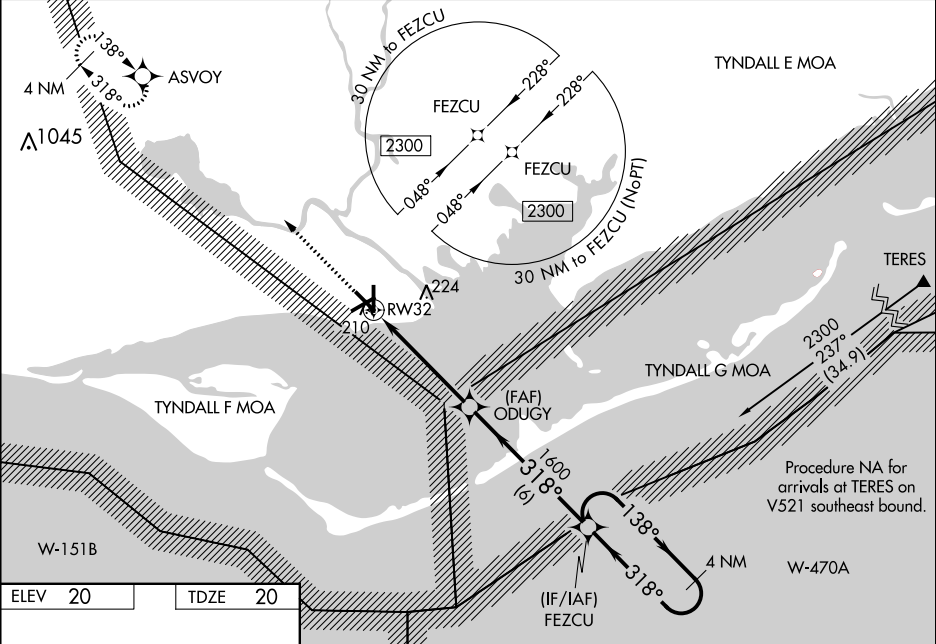
▼

▲

Baro-VNAV and VDP NA when using Northwest Florida Beaches Intl altimeter setting.  
For uncompensated Baro-VNAV systems, LNAV/VNAV NA below -1.5°C (-5°F) or above 54°C (130°F). DME/DME RNP-0.3 NA. Helicopter visibility reduction below ¾ SM NA.  
When local altimeter setting not received; use Northwest Florida Beaches Intl altimeter setting and increase all DA 134 feet and all MDA 140 feet; increase LPV and LNAV/VNAV all Cats visibility ½ mile, increase LNAV Cat C/D visibility ¾ mile and Circling Cat C/D visibility ¼ mile.  
Night Landing: Rwy 6, 14, 18, 36 NA.

MISSED APPROACH:  
Climb to 3000 direct ASVOY and hold.

ASOS <b>119.925</b>	TYNDALL APP CON ★ <b>124.15</b>	UNICOM <b>122.8 (CTAF) 0</b>
------------------------	------------------------------------	---------------------------------



3000

ASVOY

VGSI and RNAV glidepath not coincident  
(VGSI Angle 3.00/TCH 66).

4 NM Holding Pattern

↑

✱

\*LNAV only.

ODUGY

1600

FEZCU

138°

318°

2300

\*1.2 NM to RW32

1600

RW32

1.2

3.6 NM

6 NM

GP 3.00°  
TCH 40

CATEGORY	A	B	C	D
LPV DA	349-1 <sup>1</sup> / <sub>8</sub> 329 (400-1 <sup>1</sup> / <sub>8</sub> )			
LNAV/VNAV DA	396-1 <sup>1</sup> / <sub>4</sub> 376 (400-1 <sup>1</sup> / <sub>4</sub> )			
LNAV MDA	460-1	440 (500-1)	460-1 <sup>3</sup> / <sub>8</sub>	440 (500-1 <sup>3</sup> / <sub>8</sub> )
CIRCLING	520-1	500 (500-1)	520-1 <sup>1</sup> / <sub>2</sub> 500 (500-1 <sup>1</sup> / <sub>2</sub> )	580-2 560 (600-2)