

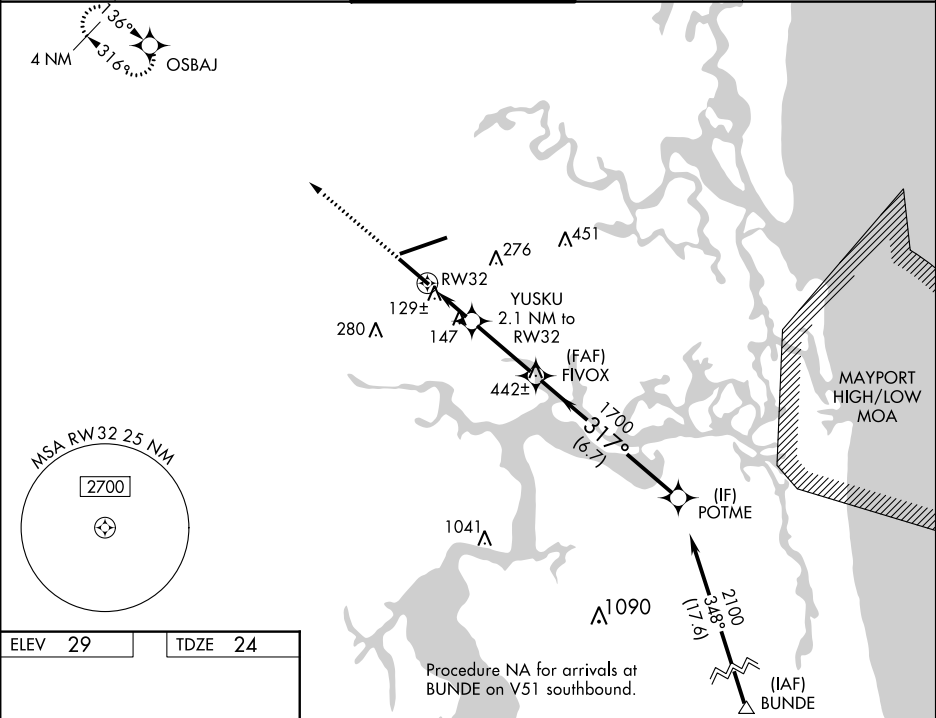
WAAS CH <b>40199</b> <b>W32A</b>	APP CRS <b>317°</b>	Rwy Idg TDZE Apt Elev	<b>7701</b> <b>24</b> <b>29</b>
--	------------------------	-----------------------------	---------------------------------------

RNAV (GPS) Z RWY 32

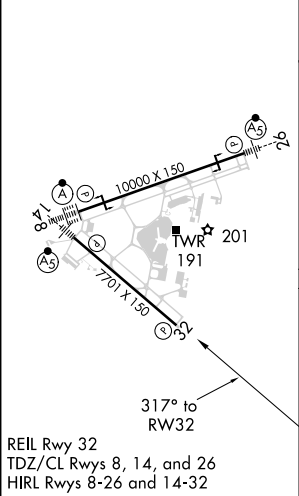
JACKSONVILLE INTL (JAX)

<div><div>▼</div><div>For uncompensated Baro-VNAV systems, procedure NA below -5°C (23°F) or above 54°C (130°F). DME/DME RNP-0.3 NA. Helicopter visibility reduction below ¾ SM NA.</div></div>	MISSED APPROACH: Climb to 2000 direct OSBAJ and hold.
---	---

D-ATIS <b>125.85</b>	JACKSONVILLE APP CON <b>119.0 269.9</b>	JACKSONVILLE TOWER <b>118.3 317.7</b>	GND CON <b>121.9 348.6</b>	CLNC DEL <b>119.5 290.275</b>
-------------------------	--	--	-------------------------------	----------------------------------



ELEV 29	TDZE 24
---------	---------



2000	OSBAJ	VGSi and RNAV glidepath not coincident (VGSi Angle 3.00/TCH 67).			POTME
*LNAV only.		YUSKU 2.1 NM to RW32	FIVOX 1700	2100	GP 3.00° TCH 50
		*1 NM to RW32	*740	1700	
		1 NM	1.1 NM	3 NM	6.7 NM
CATEGORY	A	B	C	D	
LPV DA	336-1 312 (400-1)				
LNAV/VNAV DA	387-1¼ 363 (400-1¼)				
LNAV MDA	400-1 376 (400-1)				
CIRCLING	520-1 491 (500-1)	520-1½ 491 (500-1½)	640-2 611 (700-2)		