

MIAMI, FLORIDA

AL-5349 (FAA)

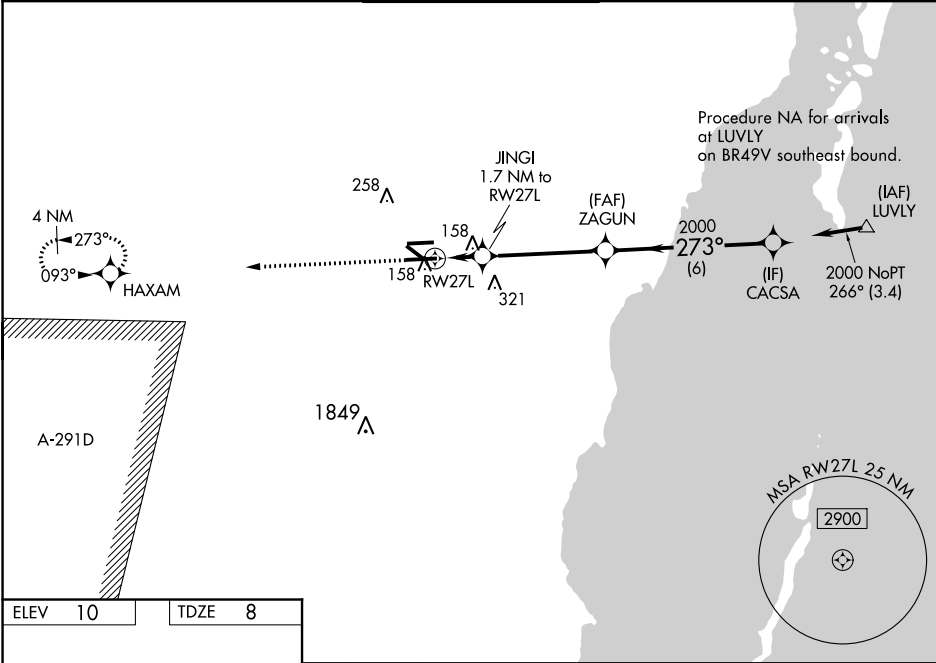
19115

WAAS CH 56400 W27A	APP CRS 273°	Rwy Idg 6000 TDZE 8 Apt Elev 10
--	------------------------	--

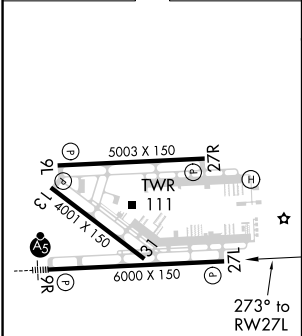
RNAV (GPS) RWY 27L
MIAMI EXECUTIVE (TMB)

RNP APCH. Circling Rwy 13, 31 NA at night. Rwy 27L helicopter visibility reduction below $\frac{3}{4}$ SM NA. For uncompensated Baro-VNAV systems, LNAV/VNAV NA below -15°C or above 43°C . VDP and Baro-VNAV NA when using Miami Intl altimeter setting. When local altimeter setting not received, use Miami Intl altimeter setting and increase LPV DA to 235 feet, LNAV/VNAV DA to 368 feet and all MDA 40 feet, increase LNAV Cats C/D visibility $\frac{1}{4}$ SM. <div>⚠</div> <div>⚠</div>			MISSED APPROACH: Climb to 2000 direct HAXAM and hold.
--	--	--	--

ATIS 124.0	MIAMI APP CON 125.5 354.1	TAMiami TOWER ★ 118.9 (CTAF) 0	GND CON 121.7	CLNC DEL 133.0
----------------------	-------------------------------------	---	-------------------------	--------------------------



ELEV 10	TDZE 8
---------	--------



REIL Rwy 13
HIRL Rwy 9R-27L **0**
MIRL Rwy 9L-27R and 13-31

2000 HAXAM ↑					
*LNAV only.		JINGI 1.7 NM to RWY 27L	ZAGUN 2000	CACSA 2000	GP 3.00° TCH 50
*1.1 NM to RWY 27L		*580	273°	2000	
1.1 NM 0.6		4.4 NM	6 NM		
CATEGORY	A	B	C	D	
LPV DA	208- $\frac{3}{4}$		200 (200- $\frac{3}{4}$)		
LNAV/VNAV DA	341-1 $\frac{1}{8}$		333 (400-1 $\frac{1}{8}$)		
LNAV MDA	420-1	412 (500-1)	420-1 $\frac{1}{8}$	412 (500-1 $\frac{1}{8}$)	
CIRCLING	460-1	450 (500-1)	460-1 $\frac{1}{2}$ 450 (500-1 $\frac{1}{2}$)	640-2 630 (700-2)	

MIAMI, FLORIDA
Amdt 2D 25APR19

25°39'N-80°26'W

MIAMI EXECUTIVE (TMB)
RNAV (GPS) RWY 27L

SE-3, 03 DEC 2020 to 31 DEC 2020

SE-3, 03 DEC 2020 to 31 DEC 2020