

WAAS  
CH **99729**  
**W32A**

APP CRS  
**323°**

Rwy Idg **4755**  
TDZE **23**  
Apt Elev **23**

RNAV (GPS) RWY 32

TREASURE COAST INTL (FPR)

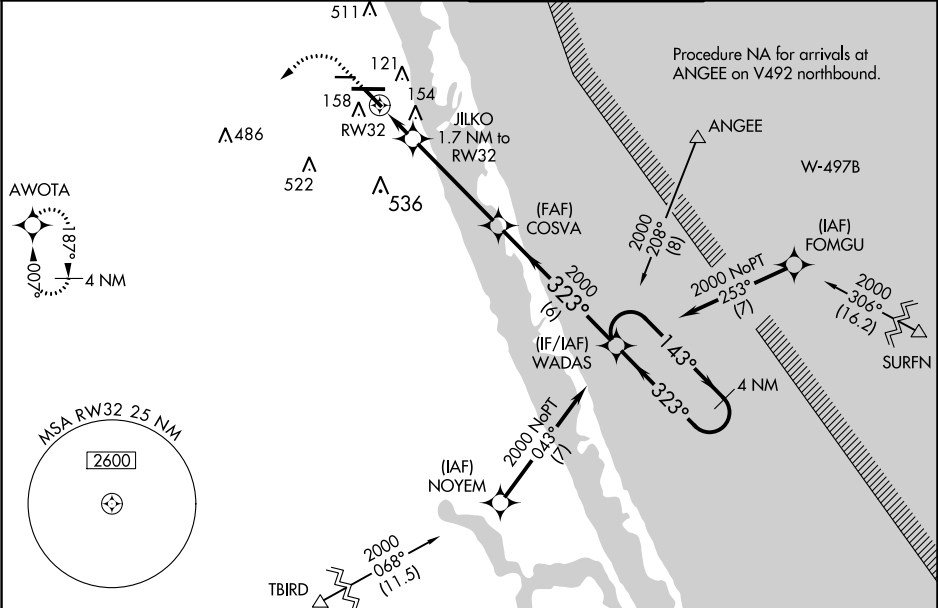
▼

⚠

For uncompensated Baro-VNAV systems, LNAV/VNAV NA below -15C (5°F) or above 43°C (109°F). DME/DME RNP-0.3 NA. When local altimeter setting not received, use Vero Beach altimeter setting and increase LPV DA to 325, LNAV/VNAV DA to 329 feet and MDA 40 feet; increase LPV all Cats, LNAV/VNAV all Cats, and LNAV Cats C/D visibility ¼ SM. Increase Circling visibility Cat C/D ¼ SM. Baro-VNAV NA when using Vero Beach altimeter setting.

MISSED APPROACH:  
Climb to 520 then climbing left turn to 2000 direct AWOTA and hold.

ATIS <b>134.825</b>	PALM BEACH APP CON <b>132.8</b>	FORT PIERCE TOWER★ <b>128.2 (CTAF) 0</b>	GND CON <b>119.55</b>
------------------------	------------------------------------	---	--------------------------



ELEV 23

TDZE 23

520

2000

AWOTA

Procedure NA for arrivals at TBIRD on V159 southbound and V531 northeast bound.

4000 X 75

288

10R

492 X 150

28L

TWR 142

323° to RW32

REIL Rwy 10R and 28L 0

MIRL all Rwy 0

\*LNAV only.

JILKO 1.7 NM to RW32

\*1.1 NM to RW32

RW32

600\*

COSVA

2000

WADAS

323°

143°

2000

GP 3.00°

TCH 45

CATEGORY	A	B	C	D
LPV DA		302-7/8	279 (300-7/8)	
LNAV/VNAV DA		306-7/8	283 (300-7/8)	
LNAV MDA	420-1	397 (400-1)	420-1 1/8	397 (400-1 1/8)
CIRCLING	460-1 437 (500-1)	480-1 457 (500-1)	880-2 1/2 857 (900-2 1/2)	880-2 3/4 857 (900-2 3/4)

FORT PIERCE, FLORIDA

Amdt 1D 18JUN20

27°30'N-80°22'W

TREASURE COAST INTL (FPR)

RNAV (GPS) RWY 32