

APP CRS	Rwy Idg	6492
292°	TDZE	23
	Apt Elev	23

RNAV (GPS) RWY 28L

TREASURE COAST INTL (FPR)

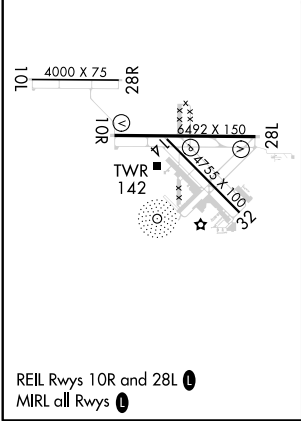
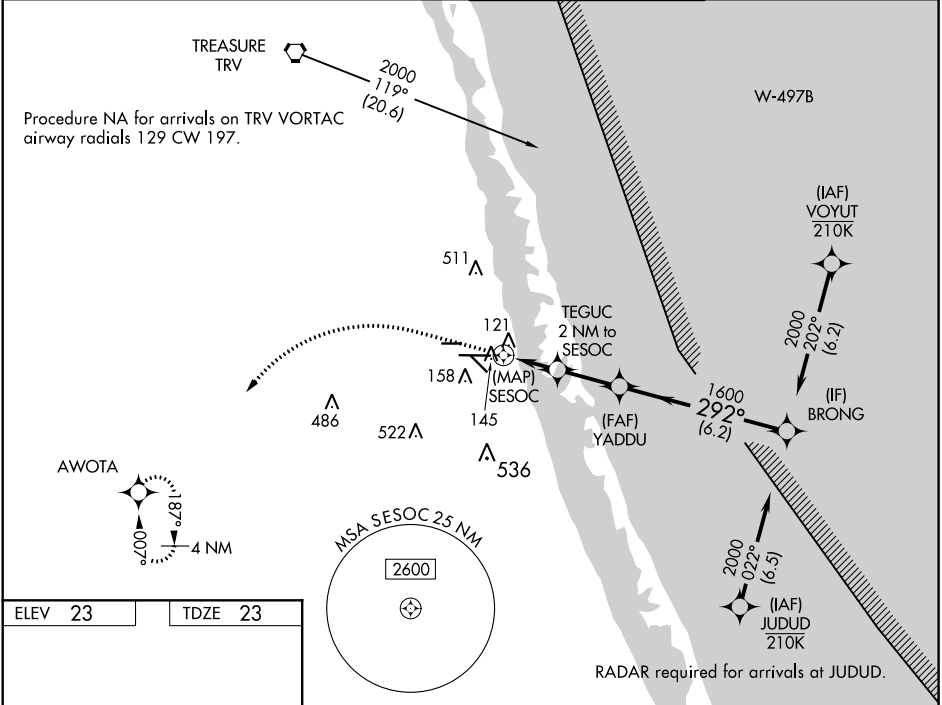
▼




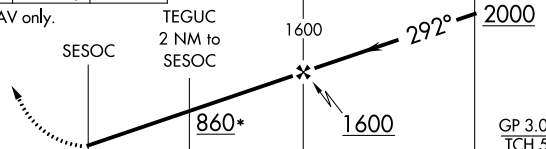

⚠

Helicopter visibility reduction below $\frac{3}{4}$ SM NA. For uncompensated Baro-VNAV systems, LNAV/VNAV NA below -15°C (5°F) or above 43°C (109°F). DME/DME RNP-0.3 NA. When local altimeter setting not received, use Vero Beach altimeter setting and increase LNAV/VNAV DA to 435 feet and MDA 40 feet; increase LNAV/VNAV visibility all Cats and LNAV visibility Cats C/D $\frac{1}{8}$ SM. Increase Circling visibility Cat C/D $\frac{1}{4}$ SM. Baro-VNAV NA when using local altimeter setting.

MISSED APPROACH: Climb to 440 then climbing left turn to 2000 direct AWOTA and hold.

ATIS 134.825	PALM BEACH APP CON 132.8	FORT PIERCE TOWER ★ 128.2 (CTAF) 0	GND CON 119.55
-----------------	-----------------------------	---------------------------------------	-------------------



440	2000	AWOTA				
						
*LNAV only.						
						
			GP 3.00° TCH 59			
CATEGORY	A		B	C	D	
LNAV/ VNAV	DA	412-1¼		389 (400-1¼)		
LNAV	MDA	400-1		377 (400-1)		
 CIRCLING	460-1 437 (500-1)	480-1 457 (500-1)	880-2½ 857 (900-2½)	880-2¾ 857 (900-2¾)		