

RNAV (GPS) RWY 31

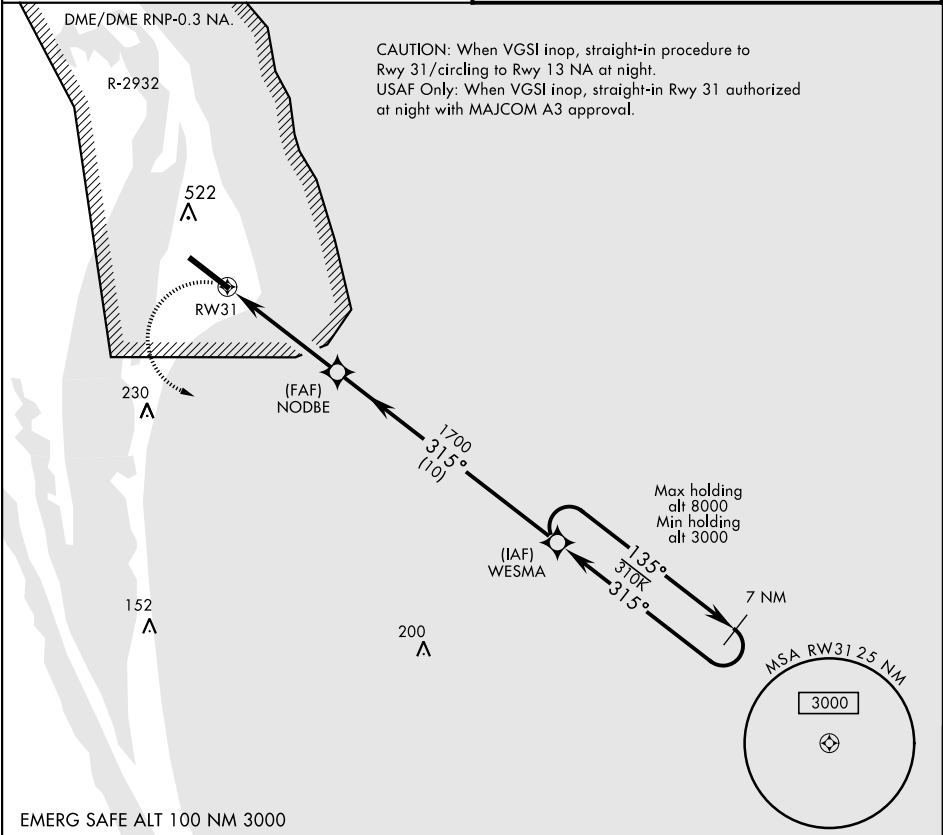
APCH CRS	Rwy ldg	10,000
315°	TDZE	9
	Arpt Elev	10

AL-51.57 [USAF]

CAPE CANAVERAL AFS SKID STRIP (KXMR)

<p>▼ * When ALS inop, increase CAT CDE vis to 1 3/8 miles. ** Circling not authorized NE of Rwy 13-31.</p>	<p>SALS (A2)</p>	<p>MISSED APPROACH: Turn left, climb to 3000 direct WESMA and hold.</p>
--	----------------------	---

<p>ORLANDO APP CON 134.95 281.425</p>	<p>CAPE TOWER ★ 118.625 143.15 239.05</p>
---	---



<p>EMERG SAFE ALT 100 NM 3000</p>		<p>WESMA</p>		<p>ELEV 10</p>		<p>TDZE 9</p>	
<p>3000 WESMA</p>		<p>WESMA</p>		<p>135°</p>		<p>3000</p>	
<p>NODBE</p>		<p>315°</p>		<p>315°</p>		<p>3000</p>	
<p>RW31</p>		<p>1700</p>		<p>3.04° TCH 79</p>		<p>5 NM</p>	
CATEGORY	A	B	C	D	E		
RNAV MDA *	500-1 491 (500-1)		500-1 1/8 491 (500-1 1/8)				
CIRCLING **	580-1 570 (600-1)		580-1 1/2 570 (600-1 1/2)	620-2 610 (700-2)	640-2 1/4 630 (700-2 1/4)		
						<p>HIRL Rwy 13-31</p>	

RNAV (GPS) RWY 31

SE-3, 03 DEC 2020 to 31 DEC 2020

SE-3, 03 DEC 2020 to 31 DEC 2020