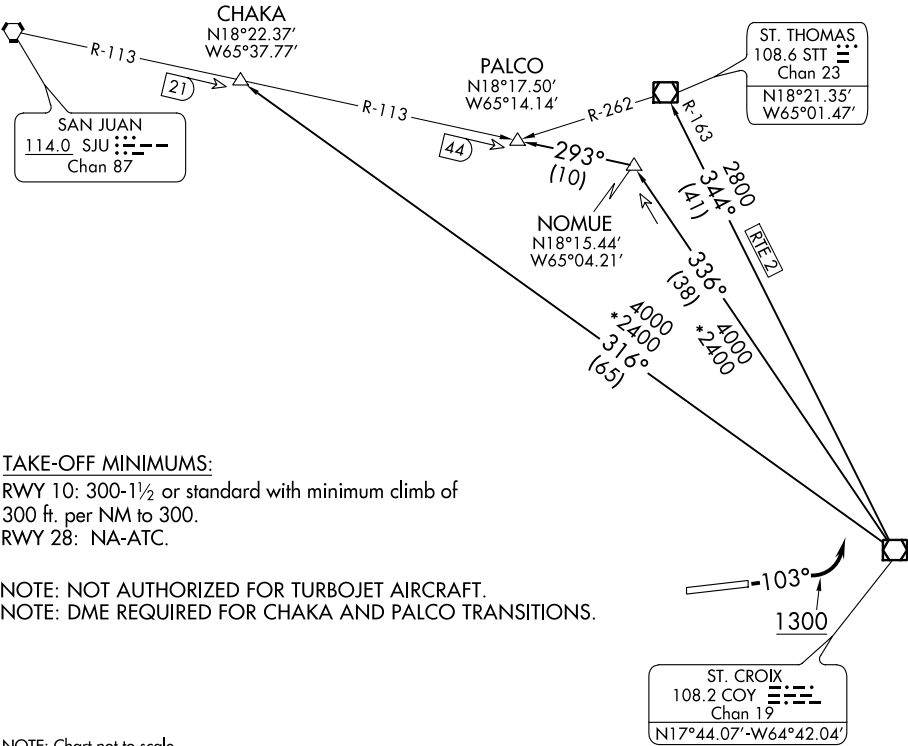


ATIS 135.65
GND CON
121.7
ST. CROIX TOWER★
118.6 239.3
SAN JUAN DEP CON
128.65 279.6

TOP ALTITUDE:
6000



TAKE-OFF MINIMUMS:
RWY 10: 300-1½ or standard with minimum climb of 300 ft. per NM to 300.
RWY 28: NA-ATC.

NOTE: NOT AUTHORIZED FOR TURBOJET AIRCRAFT.
NOTE: DME REQUIRED FOR CHAKA AND PALCO TRANSITIONS.

NOTE: Chart not to scale.

DEPARTURE ROUTE DESCRIPTION

TAKE-OFF RUNWAY 10: Climb via heading 103° to 1300, then climbing left turn to intercept assigned transition. Maintain 6000 unless assigned lower altitude. Expect FL280 or requested altitude ten minutes after departure.

CHAKA TRANSITION (HMLTN8.CHAKA): From over COY VOR/DME via COY R-316 to CHAKA/SJU 21 DME.

PALCO TRANSITION (HMLTN8.PALCO): From over COY VOR/DME via COY R-336 and SJU R-113 to PALCO INT/SJU 44 DME.

ST. THOMAS TRANSITION (HMLTN8.STT): From over COY VOR/DME via COY R-344 to STT VOR/DME.