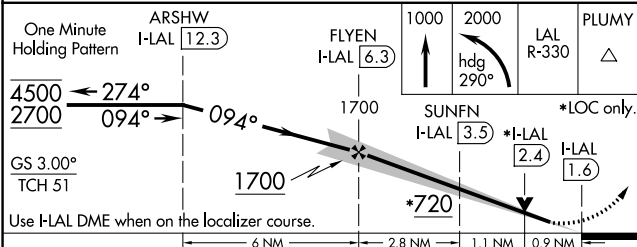
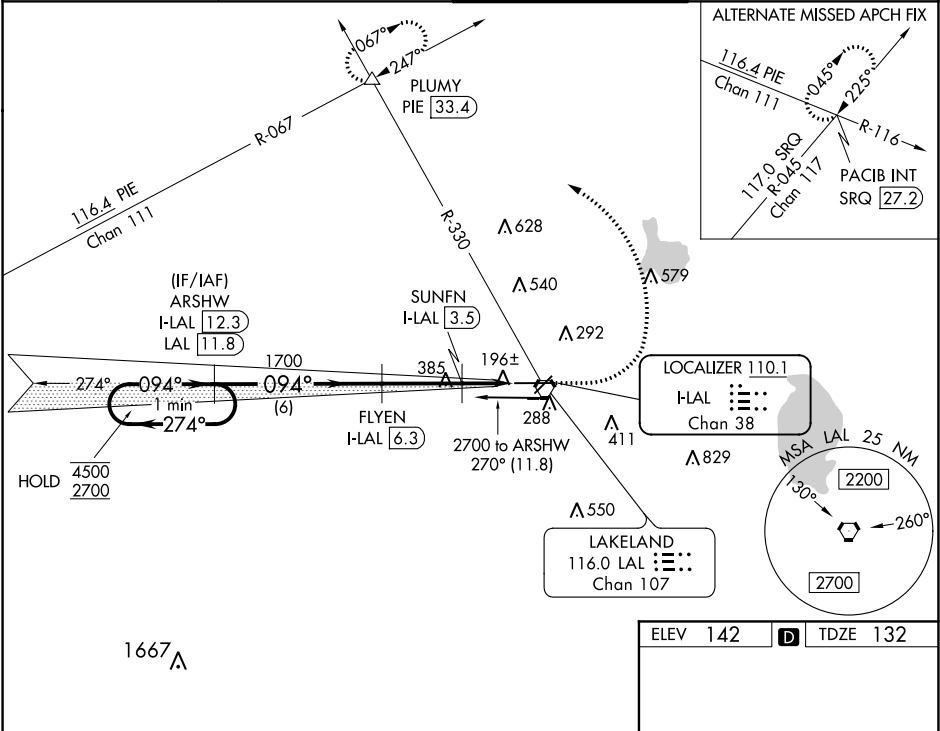


LOC/DME I-LAL 110.1 Chan 38	APP CRS 094°	Rwy Idg TDZE 132 Apt Elev 142	8414
---	------------------------	---	-------------

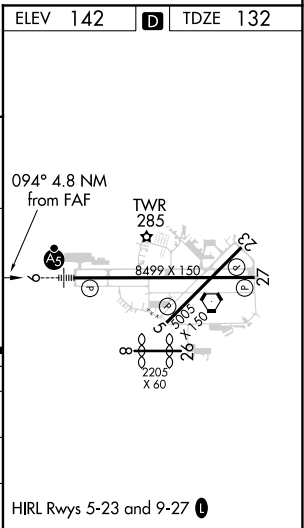
ILS or LOC RWY 9
LAKELAND LINDER INTL (LAL)

DME required.	MALSR	MISSED APPROACH: Climb to 1000 then climbing left turn to 2000 on heading 290° and on LAL VORTAC R-330 to PLUMY INT/ PIE 33.4 DME and hold.
Circling NA to Rws 8 and 26. # RVR 1800 authorized with use of FD or AP or HUD to DA.		

ATIS 118.025	TAMPA APP CON 120.65 290.3	LAKELAND TOWER 124.5 (CTAF) 0 236.775	GND CON 121.4
------------------------	--------------------------------------	---	-------------------------



CATEGORY	A	B	C	D
S-ILS 9#		332/24	200 (200-1/2)	
S-LOC 9		460/24	328 (400-1/2)	
CIRCLING	600-1 458 (500-1)	660-1 518 (600-1)	720-1 1/2 578 (600-1 1/2)	840-2 1/4 698 (700-2 1/4)



SE-3, 03 DEC 2020 to 31 DEC 2020

SE-3, 03 DEC 2020 to 31 DEC 2020