

WAAS CH <b>63209</b> <b>W27A</b>	APP CRS <b>275°</b>	Rwy Idg <b>11002</b> TDZE <b>45</b> Apt Elev <b>55</b>
--	------------------------	--

RNAV (GPS) RWY 27R  
ORLANDO SANFORD INTL (SFB)

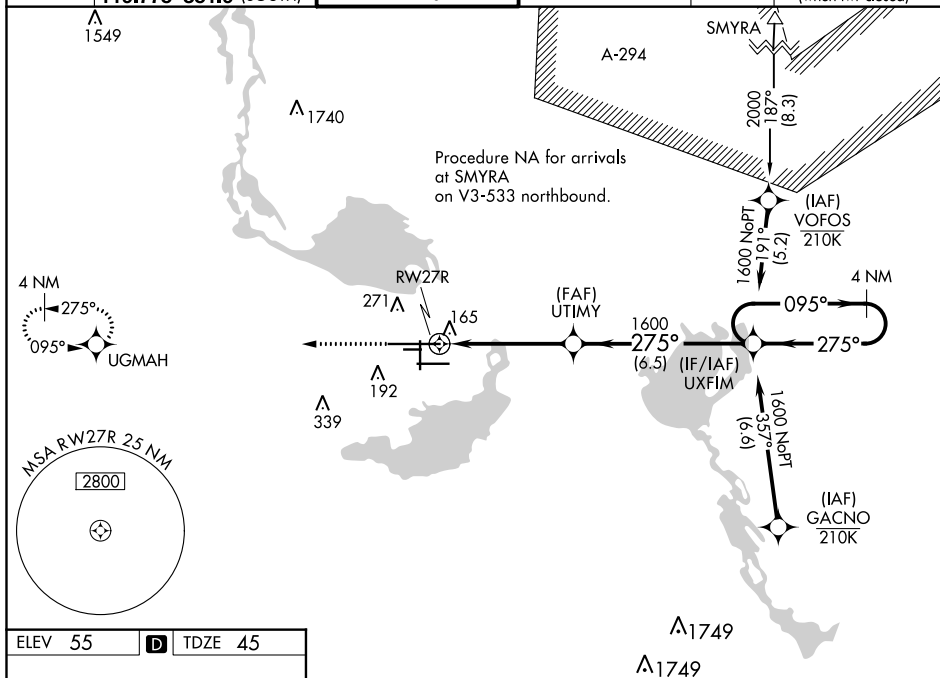
For uncompensated Baro-VNAV systems, LNAV/VNAV NA below 0°C (32°F) or above 54°C (130°F). DME/DME RNP-0.3 NA.  
For inop ALS, increase LNAV/VNAV all Cats visibility to 1¼ SM, increase LNAV Cat C/D visibility to 1 SM.

MALSR

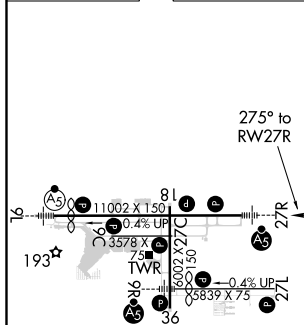


**MISSED APPROACH:**  
Climb to 2000 direct  
UGMAH and hold.

ATIS	ORLANDO APP CON	SANFORD TOWER★	GND CON	CNLC DEL	CNLC DEL
125.975	135.3 351.9 (NORTH) 119.775 351.9 (SOUTH)	120.3 (CTAF) 0 254.35	121.35 254.35	123.975	121.35 (when twr closed)



ELEV 55	<b>D</b>	TDZE 45
---------	----------	---------



MIRL Rwy 9C-27C and 18-36 **L**  
HIRL Rwy 9L-27R and 9R-27L **L**  
REIL Rwys 9C, 18, 27L and 36

2000 UGMAH VGSI and RNAV glidepath not coincident (VGSI Angle 3.00/TCH 72).

\*LNAV only.

UTIMY 1600

UXFIM

4 NM Holding Pattern

275°

095°

1600

RW27R

1.1 NM

3.7 NM

6.5 NM

GP 3.00° TCH 55

CATEGORY	A	B	C	D
LPV DA	245-½		200 (200-½)	
LNAV/VNAV DA	425-⅞		380 (400-⅞)	
LNAV MDA	420-½	375 (400-½)	420-⅝	375 (400-⅝)
CIRCLING	580-1	525 (600-1)	600-1½ 545 (600-1½)	640-2 585 (600-2)