

WAAS CH <b>82008</b> <b>W28A</b>	APP CRS <b>280°</b>	Rwy Idg <b>8003</b> TDZE <b>196</b> Apt Elev <b>201</b>
--	------------------------	---

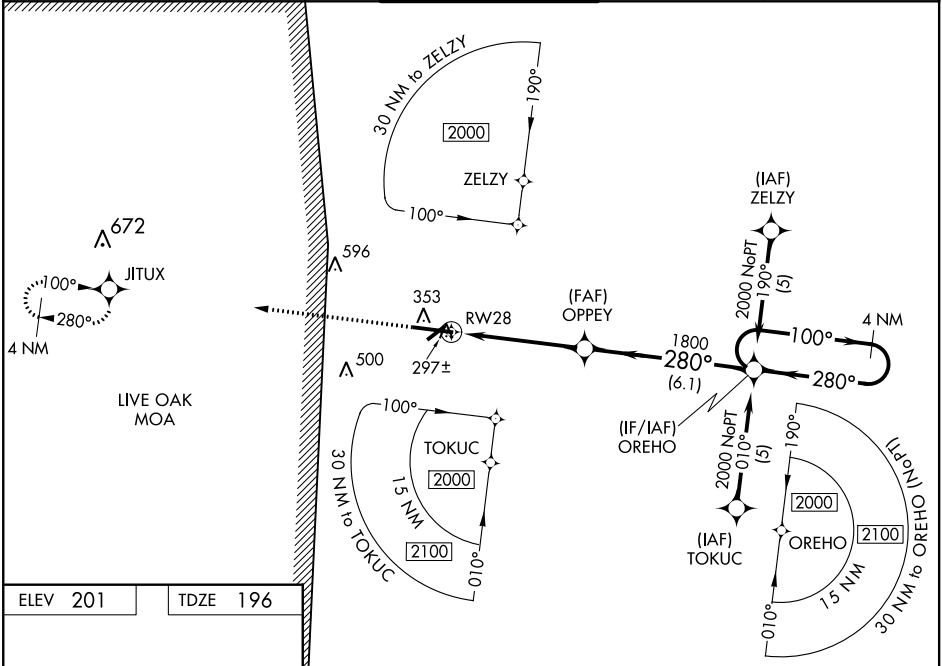
RNAV (GPS) RWY 28

LAKE CITY GATEWAY (LCQ)

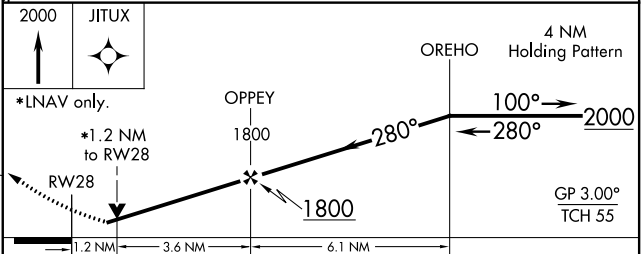
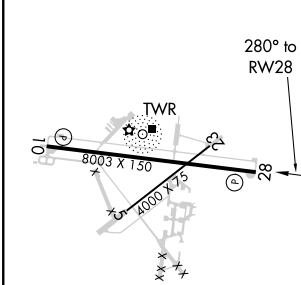
**⚠** Baro-VNAV NA when using Gainesville altimeter setting. For uncompensated Baro-VNAV systems, LNAV/VNAV NA below -18°C (0°F) or above 54°C (130°F). DME/DME RNP-0.3 NA. When local altimeter setting not received, use Gainesville altimeter setting and increase LPV DA to 624, LNAV/VNAV DA to 640 and all MDA 100 feet, increase LPV all Cats visibility ¼ mile, LNAV/VNAV all Cats visibility ½ mile, LNAV Cat C/D visibility ¼ mile, and Circling Cat C visibility ½ mile. Circling to Rwy 10 NA at night. Helicopter visibility reduction below ¾ SM not authorized.

MISSED APPROACH:  
Climb to 2000 direct  
JITUX and hold.

AWOS-3 <b>120.675</b>	JACKSONVILLE CENTER <b>125.375 254.325</b>	LAKE CITY TOWER ★ <b>119.2 (CTAF) 0 314.6</b>	GND CON <b>121.9</b>	UNICOM <b>122.95</b>
--------------------------	---	--	-------------------------	-------------------------



ELEV 201	TDZE 196
----------	----------



CATEGORY	A	B	C	D
LPV DA	540-1 3/8 344 (400-1 1/8)			
LNAV/VNAV DA	556-1 1/8 360 (400-1 1/8)			
LNAV MDA	640-1 444 (500-1)		640-1 3/8 444 (500-1 1/8)	
CIRCLING	760-1 559 (600-1)		760-1 1/2 559 (600-1 1/2)	760-2 559 (600-2)