

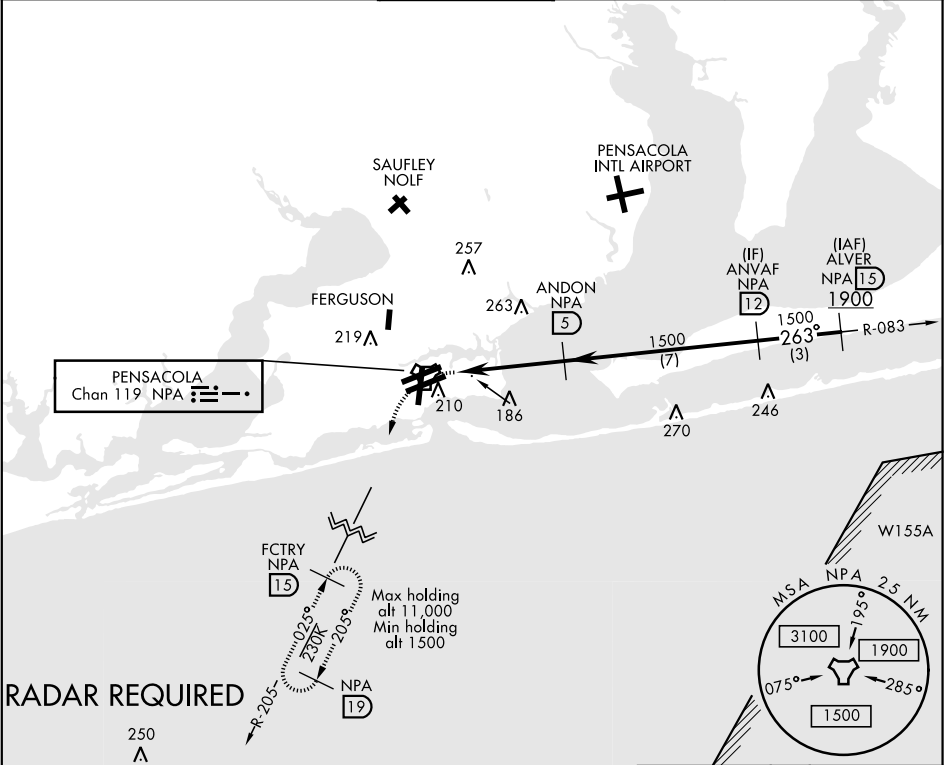
TACAN NPA Chan 119	APCH CRS 263°	Rwy ldg TDZE 22 Arprt Elev 28
-----------------------	------------------	-------------------------------------

AL-736 [USN]

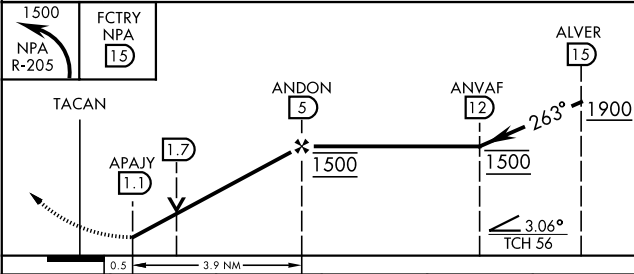
TACAN RWY 25L

PENSACOLA NAS (FORREST SHERMAN FLD) (KNPA)

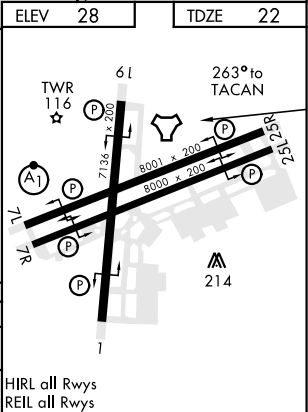
MISSED APPROACH: Climbing left turn to 1500 via NPA TACAN R-205 to FCTRY and hold.		
ATIS 124.35 266.8	PENSACOLA APP CON 120.65 270.8	SHERMAN TOWER 120.7 340.2
GND CON 121.7 336.4		CLNC DEL 134.1 268.7
ASR/ PAR		



EMERG SAFE ALT 100 NM 3100



CATEGORY	A	B	C	D	E
S-25L	440-1 418 (500-1)		440-1½ 418 (500-1½)		
CIRCLING	520-1 492 (500-1)		540-1½ 512 (600-1½)	580-2 552 (600-2)	



TACAN RWY 25L

SE-3, 03 DEC 2020 to 31 DEC 2020

SE-3, 03 DEC 2020 to 31 DEC 2020