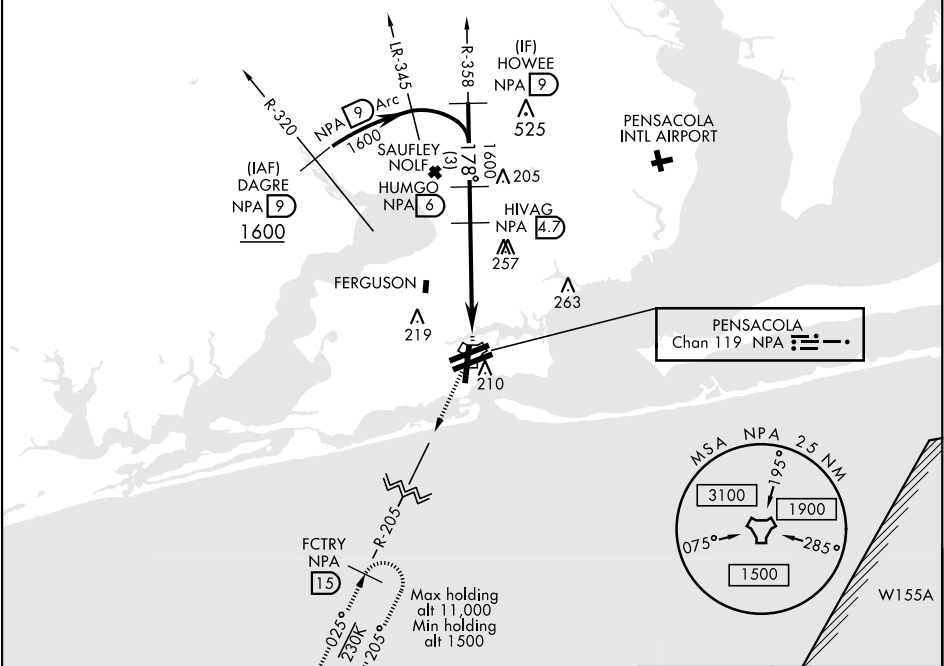


TACAN RWY 19

TACAN NPA Chan <b>119</b>	APCH CRS <b>178°</b>	Rwy Idg <b>7136</b> TDZE <b>22</b> Arpt Elev <b>28</b>	AL-736 [USN]			TACAN RWT 17	
			PENSACOLA NAS (FORREST SHERMAN FLD) (KNPA)				
RADAR Required. ▼			MISSED APPROACH: Climbing right turn to 1500 via NPA TACAN R-205 to FCTRY and hold.				
ATIS <b>124.35 266.8</b>		PENSACOLA APP CON <b>120.65 270.8</b>		SHERMAN TOWER <b>120.7 340.2</b>	GND CON <b>121.7 336.4</b>	CLNC DEL <b>134.1 268.7</b>	ASR/ PAR

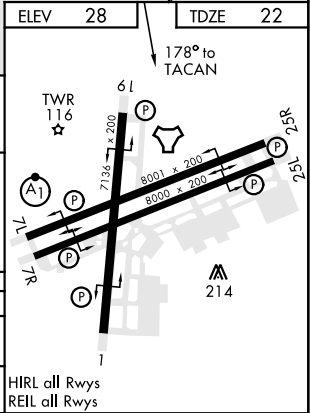
CAUTION: Intermediate seg len 4.3 NM

The final apch course is 427' from rwy centerline at 3000' from thld.



EMERG SAFE ALT 100 NM 3100

CATEGORY	A	B	C	D	E
S-19	520-1	498 (500-1)	520-1 $\frac{3}{8}$ 498 (500-1 $\frac{3}{8}$ )		
<b>C</b> CIRCLING	520-1	492 (500-1)	540-1 $\frac{1}{2}$ 512 (600-1 $\frac{1}{2}$ )	580-2	552 (600-2)



TACAN RWY 19

SE-3, 03 DEC 2020 to 31 DEC 2020

SE-3, 03 DEC 2020 to 31 DEC 2020