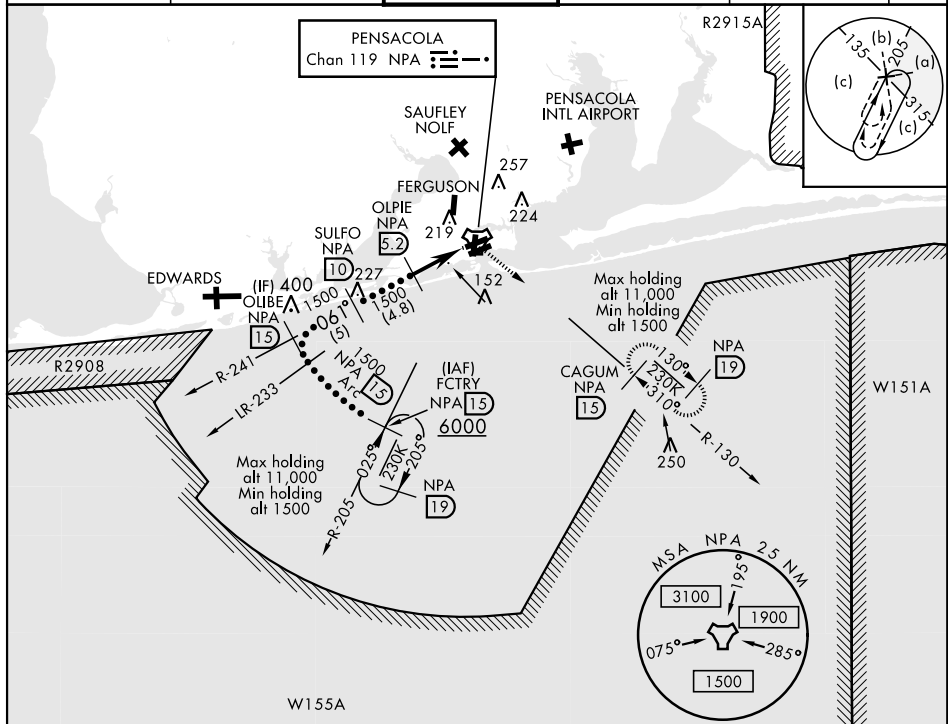


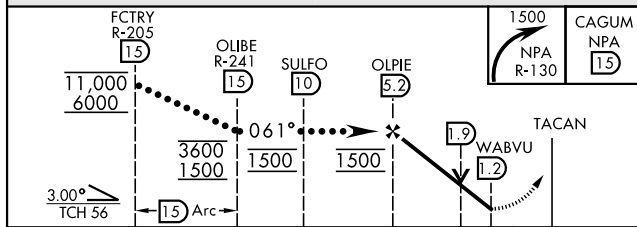
HI-TACAN RWY 7L

TACAN NPA Chan 119		APCH CRS 061°		Rwy Idg 8001 TDZE 23 Arpt Elev 28		JAL-736 [USN] PENSACOLA NAS (FORREST SHERMAN FLD) (KNPA)							
<div><div></div><div>* When ALS inop, increase vis to 1½ miles.</div></div>						<div>ALSF-1</div> <div><div>A1</div><div></div></div>		MISSED APPROACH: Climbing right turn to 1500 via NPA TACAN R-130 to CAGUM and hold.					
ATIS 124.35 266.8		PENSACOLA APP CON 120.65 270.8		SHERMAN TOWER 120.7 340.2		GND CON 121.7 336.4		CLNC DEL 134.1 268.7		ASR/ PAR			

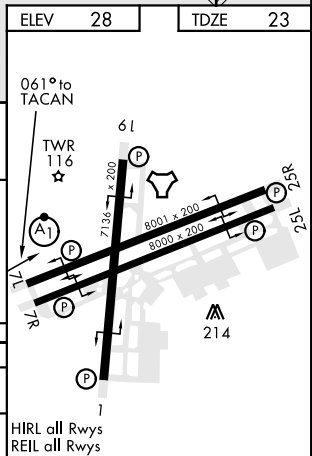


RADAR REQUIRED

EMERG SAFE ALT 100 NM 3100



CATEGORY	C	D	E
S-7L *	440- $\frac{3}{4}$	417 (500- $\frac{3}{4}$)	
C CIRCLING	540-1 $\frac{1}{2}$ 512 (600-1 $\frac{1}{2}$)	580-2	552 (600-2)



PENSACOLA, FLORIDA

30°21'N-87°19'W

PENSACOLA NAS (FORREST SHERMAN FLD) (KNPA)

HI-TACAN RWY 7L