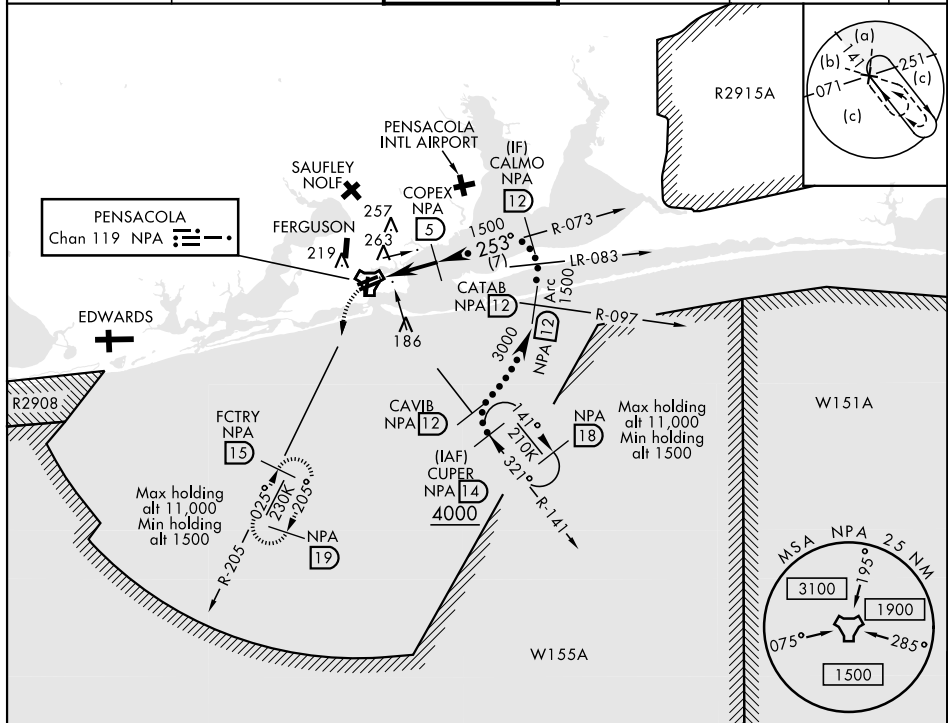


# HI-TACAN RWY 25R

TACAN NPA Chan <b>119</b>	APCH CRS <b>253°</b>	Rwy Idg TDZE Arpt Elev <b>8001</b> <b>21</b> <b>28</b>	JAL-736 [USN] PENSACOLA NAS (FORREST SHERMAN FLD) (KNPA)
------------------------------	-------------------------	--	--

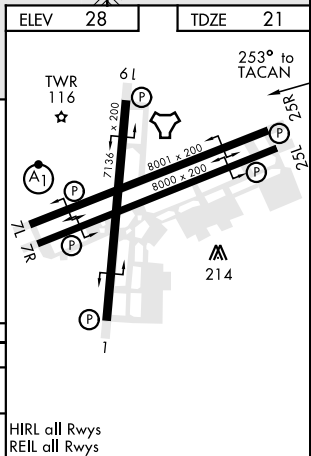
<b>V</b>	MISSED APPROACH: Climbing left turn to 1500 via NPA TACAN R-205 to FCTRY and hold.
----------	--

ATIS <b>124.35 266.8</b>	PENSACOLA APP CON <b>120.65 270.8</b>	SHERMAN TOWER <b>120.7 340.2</b>	GND CON <b>121.7 336.4</b>	CLNC DEL <b>134.1 268.7</b>	ASR/ PAR
-----------------------------	--	-------------------------------------	-------------------------------	--------------------------------	-------------



## RADAR REQUIRED EMERG SAFE ALT 100 NM 3100

1500 NPA R-205	FCTRY NPA 15	COPEX 5	CALMO R-073 12	CATAB R-097 12	CAVIB R-141 12	CUPUR 14
TACAN	CUKUB 1.1	1500	1500	3000 1500	321°	4000
5	3.9 NM		Arc	12	3.03°	TCH 56
CATEGORY	C	D	E			
S-25R	440-1½	419 (500-1½)				
CIRCLING	540-1½ 512 (600-1½)	580-2	552 (600-2)			



# HI-TACAN RWY 25R