

## ILS or LOC RWY 36

LOC I-HRT <b>111.3</b>	APCH CRS <b>358°</b>	Rwy ldg TDZE Arprt Elev <b>9600</b> <b>37</b> <b>38</b>
---------------------------	-------------------------	--

AL-734 [USAF]

HURLBURT FLD (KHRT)

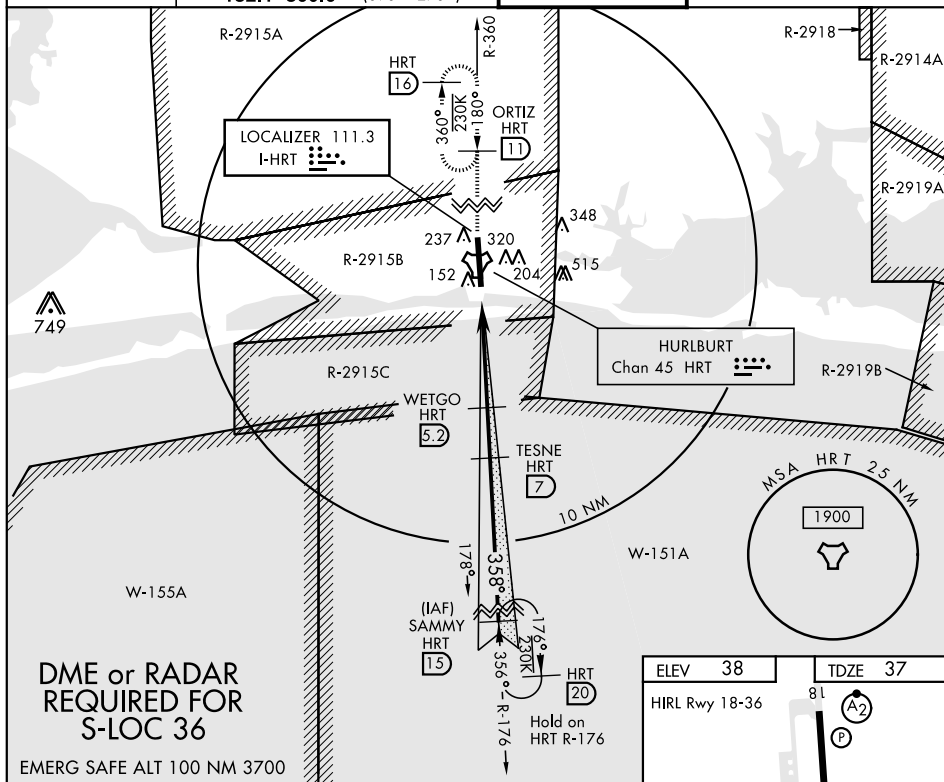
- ▼ \* When ALS inop, increase RVR to 40 and vis to  $\frac{3}{4}$  mile.  
 \*\* When ALS inop, increase CAT ABC RVR to 50 and vis to 1 mile, CAT DE RVR to 60 and vis to  $1\frac{1}{4}$  miles.

ALSF-1

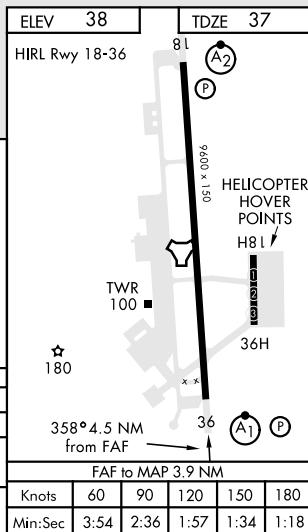


MISSED APPROACH: Climb to 1800 on HRT TACAN  
R-360 to ORTIZ/11 DME and hold.

ATIS <b>134.475 360.675</b>	EGLIN APP CON <b>125.1 281.45 (271°-089°)</b> <b>132.1 360.6 (090°-270°)</b>	HURLBURT TOWER <b>126.5 351.675</b>	GND CON <b>123.975 275.8</b>
--------------------------------	--	--	---------------------------------



1800 HRT R-360	ORTIZ HRT 11					
TACAN	GFROG 1.3	1.9	WETGO 5.2	TESNE 7	SAMMY 15	
6 NM		3.9 NM				
CATEGORY		A	B	C	D	E
S-ILS 36 *		237/24		200	(200-½)	
S-LOC 36 **		360/24	323 (400-½)	360/40 323 (400-¾)		
CIRCLING		640-1	602 (700-1)	640-1¾ 602 (700-1¾)	640-2 602 (700-2)	880-3 842 (900-3)



## ILS or LOC RWY 36