

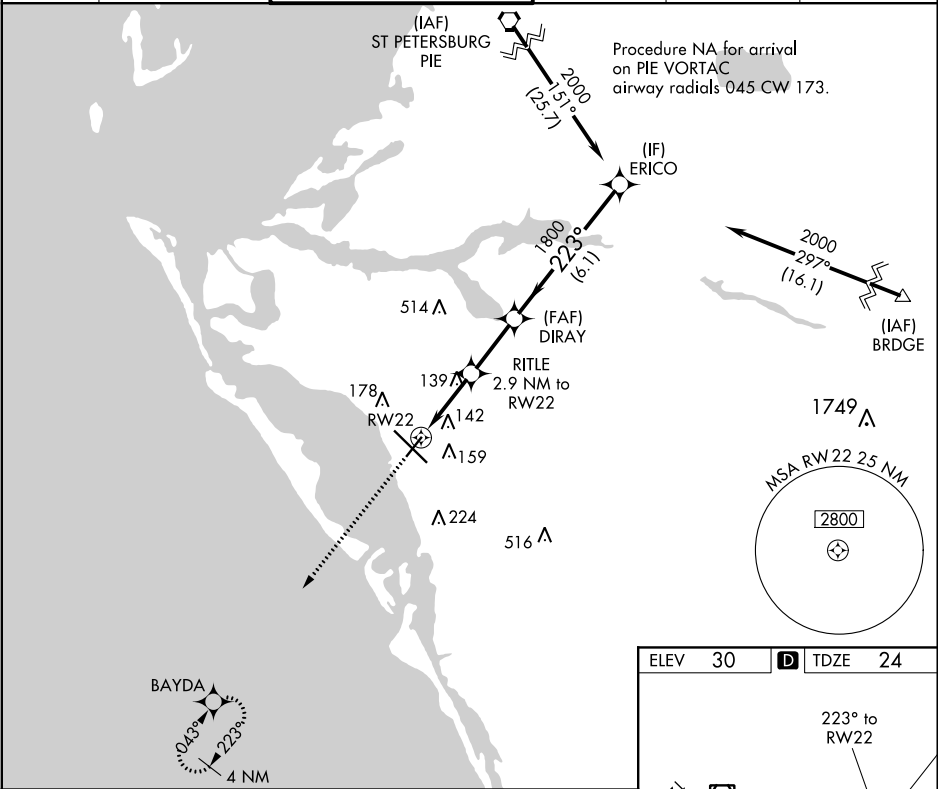
| | | |
|---------|----------|------|
| APP CRS | Rwy Idg | 5006 |
| 223° | TDZE | 24 |
| | Apt Elev | 30 |

RNAV (GPS) RWY 22

SARASOTA/BRADENTON INTL (SRQ)

| | |
|--|---|
| RNP APCH. | MISSED APPROACH: Climb to 2000 direct BAYDA and hold. |
| ▼ Rwy 22 helicopter visibility reduction below 1 SM NA. For uncompensated Baro-VNAV systems, LNAV/VNAV NA below -15°C or above 43°C. | |

| | | | | | |
|---------|----------------|-------------------|-------------|----------|--------|
| ATIS | TAMPA APP CON | SARASOTA TOWER★ | GND CON | CLNC DEL | UNICOM |
| 124.375 | 119.65 353.575 | 120.1(CTAF) 256.8 | 121.9 273.6 | 118.25 | 122.95 |



| | | | |
|-------------|----------------------|--|-------------------|
| 2000 | BAYDA | VGSi and RNAV glidepath not coincident (VGSi Angle 3.00/TCH 43). | ERICO |
| *LNAV only. | RITLE 2.9 NM to RW22 | DIRAY 1800 | 2000 |
| RW22 | 1000* | 1800 | GP 3.00° TCH 57 |
| 2.9 NM | 2.5 NM | 6.1 NM | |
| CATEGORY | A | B | C |
| LNAV/DA | 303-1 | 279 (300-1) | |
| LNAV MDA | 400-1 | 376 (400-1) | |
| CIRCLING | 500-1 470 (500-1) | 500-1½ 470 (500-1½) | 580-2 550 (600-2) |

