
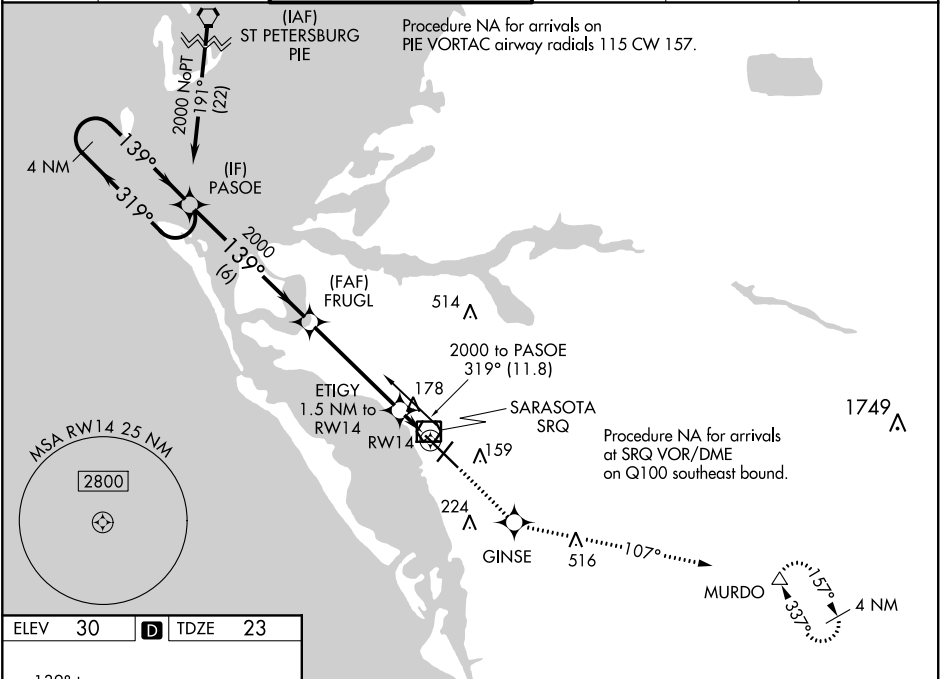


WAAS CH 86705 W14A	APP CRS 139°	Rwy Idg 7540 TDZE 23 Apt Elev 30
--	------------------------	---

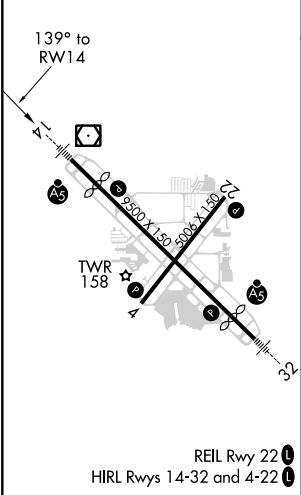
RNAV (GPS) RWY 14

SARASOTA/BRADENTON INTL (SRQ)

RNP APCH.			<div>MALSR</div> <div></div>	MISSED APPROACH: Climb to 3000 direct GINSE and on track 107° to MURDO and hold.	
<div>▼ For uncompensated Baro-VNAV systems, LNAV/VNAV NA below -15°C or above 43°C. When control tower closed, LPV and LNAV/VNAV NA; increase LNAV all Cats visibility to 1 mile. When control tower closed, inop table does not apply to LNAV Cats A and B. When control tower closed, for inop MALSR, increase LNAV Cats C and D visibility to 1½ mile.</div>					
ATIS 124.375	TAMPA APP CON 119.65 353.575	SARASOTA TOWER ★ 120.1(CTAF) 0 256.8	GND CON 121.9 273.6	CLNC DEL 118.25	UNICOM 122.95



ELEV 30	D	TDZE 23
---------	---	---------



4 NM Holding Pattern		3000	GINSE	MURDO
PASOE		↑	✱	tr 107°
FRUGL		2000		△
ETIGY 1.5 NM to RW14				*LNAV only.
GP 3.00° TCH 54				
RW14				
6 NM		4.5 NM	1.5 NM	
CATEGORY	A	B	C	D
LPV DA	223-½ 200 (200-½)			
LNAV/VNAV DA	489-1⅛ 466 (500-1⅛)			
LNAV MDA	440-½	417 (500-½)	440-¾	417 (500-¾)
CIRCLING	500-1	470 (500-1)	500-1½ 470 (500-1½)	580-2 550 (600-2)