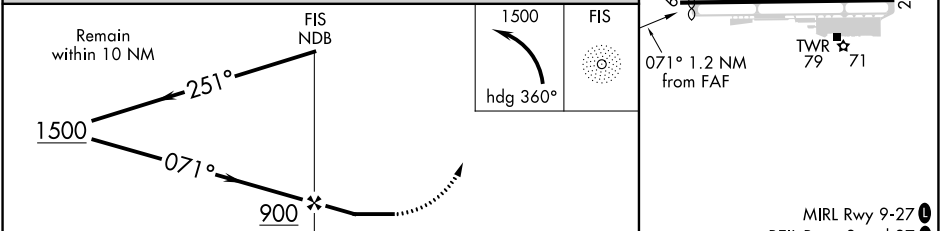
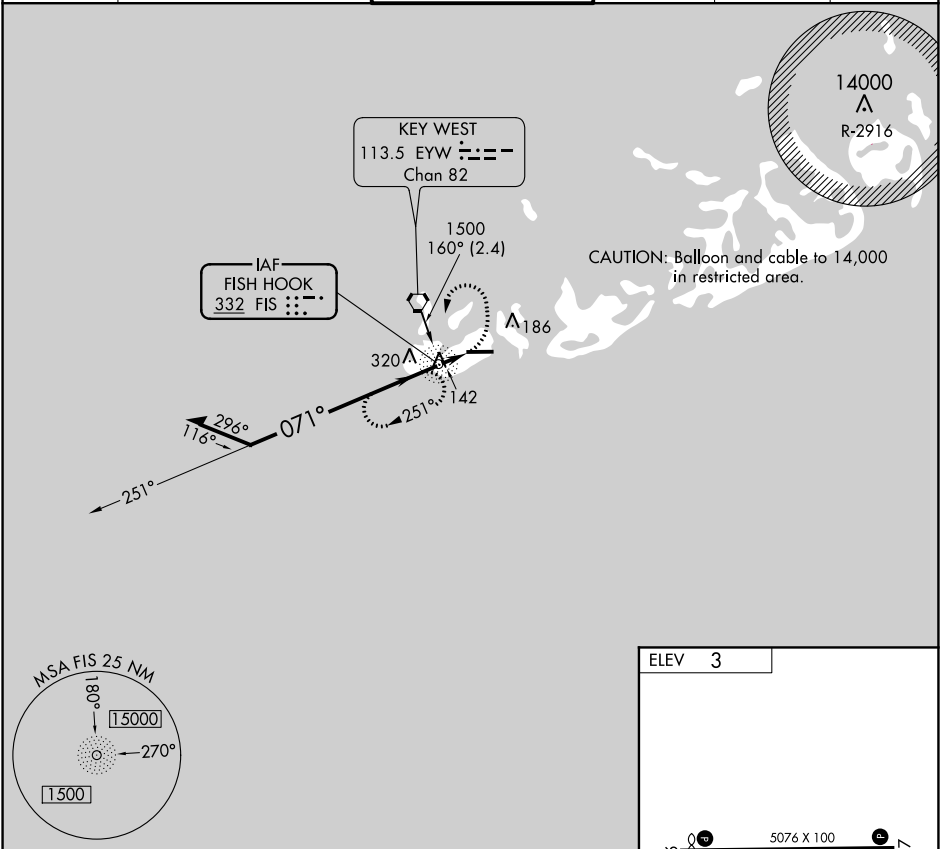


NDB FIS 332	APP CRS 071°	Rwy ldg TDZE Apt Elev	N/A N/A 3
KEY WEST INTL (EYW)			

ASR

MISSED APPROACH: Climbing left turn to 1500 via heading 360°, then left turn direct FIS NDB and hold.

ATIS 119.675	NAVY KEY WEST APP CON ★ 124.025 313.7	KEY WEST TOWER ★ 118.2 (CTAF) 0 257.8	GND CON 121.9	CLNC DEL 121.9	UNICOM 122.95
------------------------	---	---	-------------------------	--------------------------	-------------------------



			1.2 NM		REIL Rwy's 9 and 27					
CATEGORY	A	B	C	D	FAF to MAP 1.2 NM					
CIRCLING	500-1	497 (500-1)	500-1½	620-2	Knots	60	90	120	150	180
			497 (500-1½)	617 (700-2)	Min:Sec	1:12	0:48	0:36	0:29	0:24