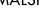
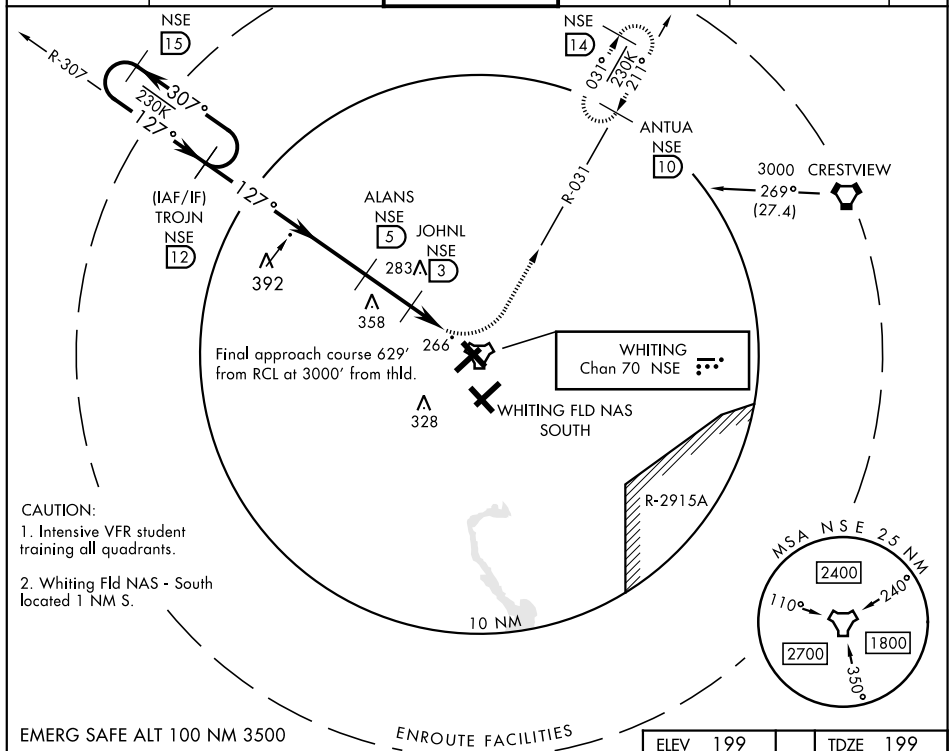


MILTON, FLORIDA

TACAN RWY 14

TACAN NSE Chan 70	APCH CRS 127°	Rwy Idg 6001 TDZE 199 Arpt Elev 199	AL-602 [USN]		WHITING FLD NAS - NORTH (KNSE)		
▼ * Circling not authorized in sector SE of Rwy 5-23 and SW of Rwy 14-32.			MALS R 	MISSED APPROACH: Climb to 600, then climbing left turn to 3000, intercept NSE TACAN R-031 to ANTUA and hold. Continue climb in hold. Contact Pensacola APP CON.			
ATIS ★ 290.325	PENSACOLA APP CON 127.35 278.8		NORTH WHITING TOWER ★ 121.4 306.925		GND CON 251.15	CNLC DEL 257.775	ASR



EMERG SAFE ALT 100 NM 3500

ENROUTE FACILITIES

600
↑

3000
NSE
R-031

ANTUA
NSE
10

TROJN
R-307
12

3000
← 307°
127° →

127°

ALANS
5

1700

3.14°
TCH 51

JOHNL
3

800

LUZZE
1.2

TACAN

2 NM

1.8 NM

ELEV 199

TDZE 199

127° to TACAN

A5

P

0.7% DOWN

23

5001 × 200

5003 × 200

TWR 242

CATEGORY	A	B	C	D
S-14	520 - 1 321 (400 - 1)			
CIRCLING*	600-1 401 (500-1)	660-1 461 (500-1)	660-1½ 461 (500-1½)	760-2 561 (600-2)

HIRL all Rwy

MILTON, FLORIDA

30° 43' N-87° 01' W

WHITING FLD NAS - NORTH (KNSE)

TACAN RWY 14

Amdt 4 10SEP20

SE-3, 03 DEC 2020 to 31 DEC 2020