

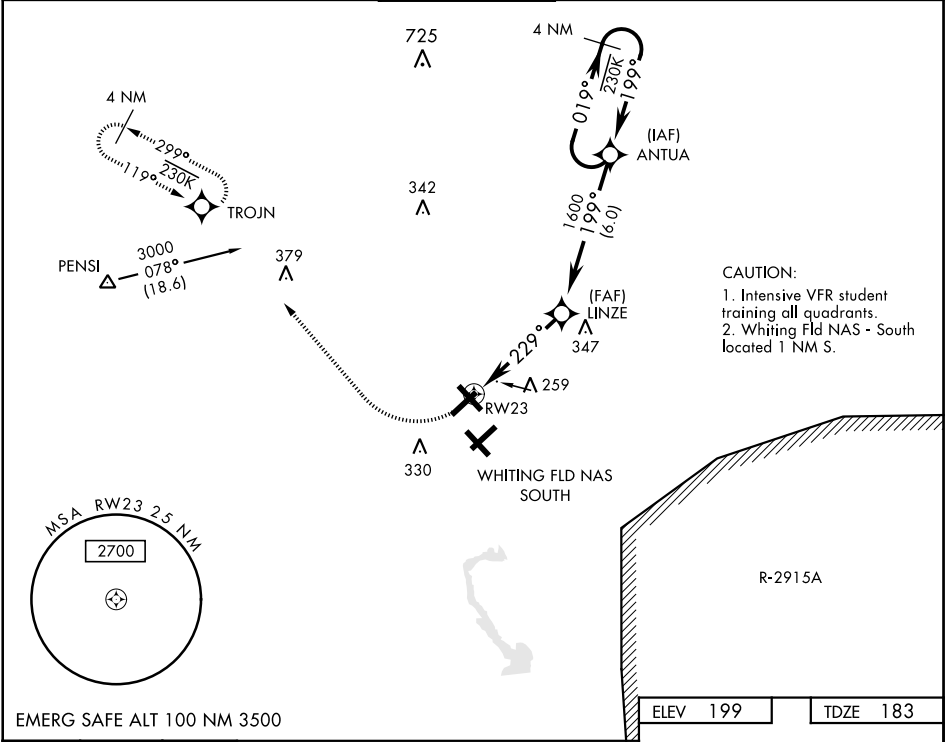
RNAV (GPS) RWY 23

APCH CRS	Rwy Idg	6003
229°	TDZE	183
	Arprt Elev	199

AL-602 [USN]

WHITING FLD NAS - NORTH (KNSE)

RNP APCH		MISSED APPROACH: Climb to 700, then climbing right turn to 3000 direct TROJN and hold. Continue climb in hold. Contact Pensacola APP CON.			
* Circling not authorized in sector SE of Rwy 5-23 and SW of Rwy 14-32.					
ATIS ★	PENSACOLA APP CON	NORTH WHITING TOWER ★	GND CON	CLNC DEL	ASR
290.325	127.35 278.8	121.4 306.925	251.15	257.775	



700	3000	TROJN		
↑	↪	⬤		
ANTUA				
1 NM to RW23	LINZE	3000		
RW23	1600	019° → ← 199°		
229°	199°	3.04° TCH 52		
4.2 NM				
CATEGORY	A	B	C	D
LNAV MDA	540-1 357 (400-1)			
CIRCLING*	600-1 401 (500-1)	660-1 461 (500-1)	660-1½ 461 (500-1½)	760-2 561 (600-2)

229° to RW23

3000

199°

019°

1 NM to RW23

RW23

LINZE

1600

3.04° TCH 52

4.2 NM

CATEGORY

A

B

C

D

LNAV MDA

540-1 357 (400-1)

CIRCLING*

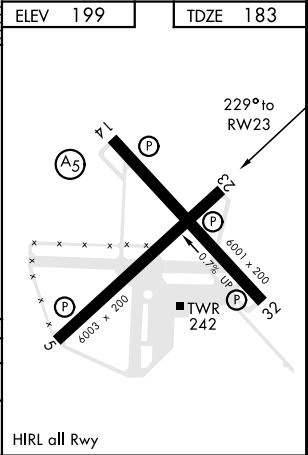
600-1
401 (500-1)

660-1
461 (500-1)

660-1½
461 (500-1½)

760-2
561 (600-2)

HIRL all Rwy



RNAV (GPS) RWY 23

SE-3, 03 DEC 2020 to 31 DEC 2020

SE-3, 03 DEC 2020 to 31 DEC 2020