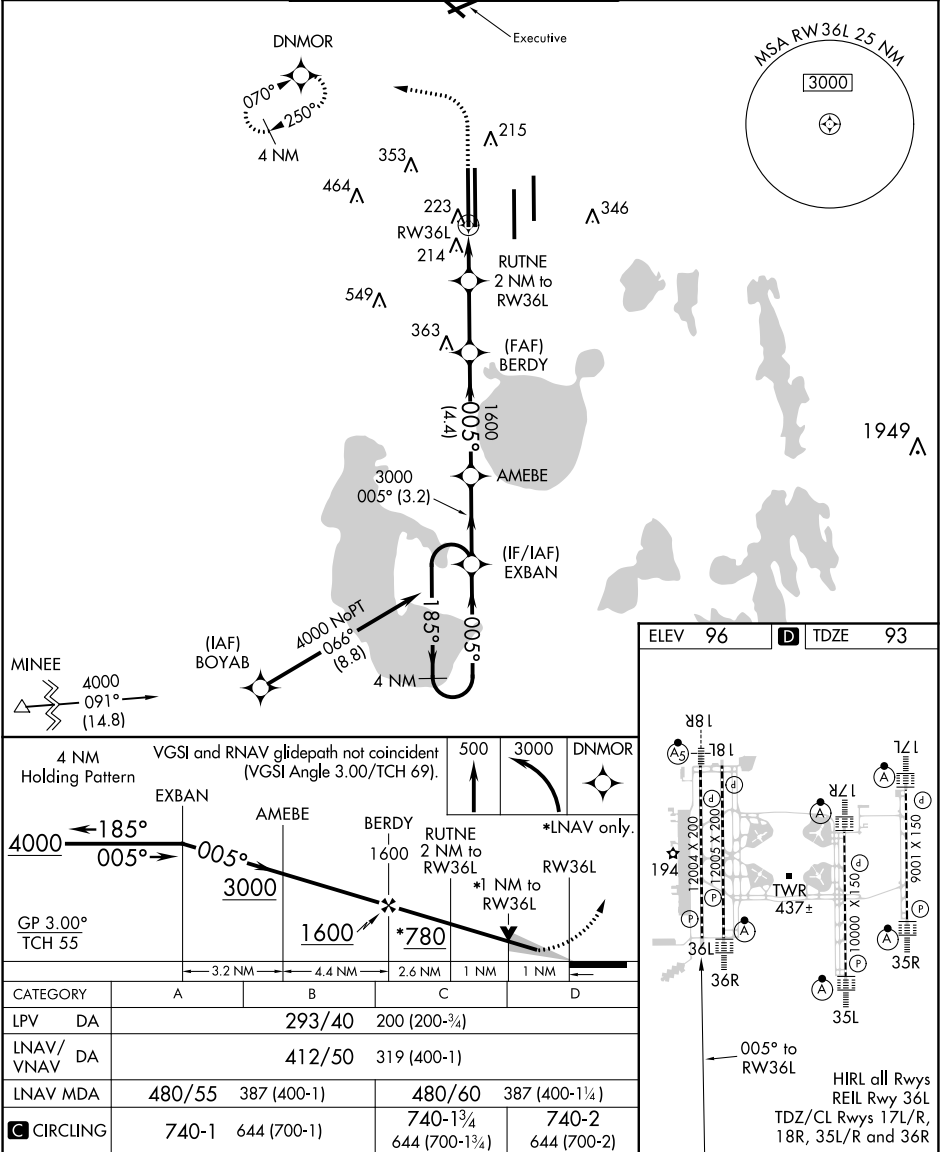


WAAS CH <b>82313</b> <b>W36B</b>	APP CRS <b>005°</b>	Rwy Idg <b>11621</b> TDZE <b>93</b> Apt Elev <b>96</b>
--	------------------------	--

RNAV (GPS) RWY 36L  
ORLANDO INTL (MCO)

<p>▼ For uncompensated Baro-VNAV systems, LNAV/VNAV NA below -1°C (31°F) or above 54°C (130°F). Simultaneous approach authorized. LNAV procedure NA during simultaneous operations. Use of FD or AP providing RNAV track guidance required during simultaneous operations. DME/DME RNP-0.3 NA.</p>	<p>MISSED APPROACH: Climb to 500 then climbing left turn to 3000 direct DNMOR and hold, continue climb-in-hold to 3000.</p>
--	---

D-ATIS ARR <b>121.25</b> DEP <b>120.525</b>	ORLANDO APP CON <b>124.8 307.0</b>	ORLANDO TOWER <b>124.3</b> (Rwys 18L-36R, 18R-36L) <b>253.5</b> <b>118.45</b> (Rwys 17L-35R, 17R-35L) <b>253.5</b>	GND CON <b>126.4 275.8</b> (East) <b>121.8 275.8</b> (West)	CLNC DEL <b>134.7</b> <b>341.7</b>	CPDLC
---	---------------------------------------	--	---	--	-------



SE-3, 03 DEC 2020 to 31 DEC 2020

SE-3, 03 DEC 2020 to 31 DEC 2020