

LOC/DME I-OJP 110.7 Chan 44	APP CRS 005°	Rwy Idg 11601 TDZE 92 Apt Elev 96	ILS RWY 36R (CAT II & III) ORLANDO INTL (MCO)
---	------------------------	--	--

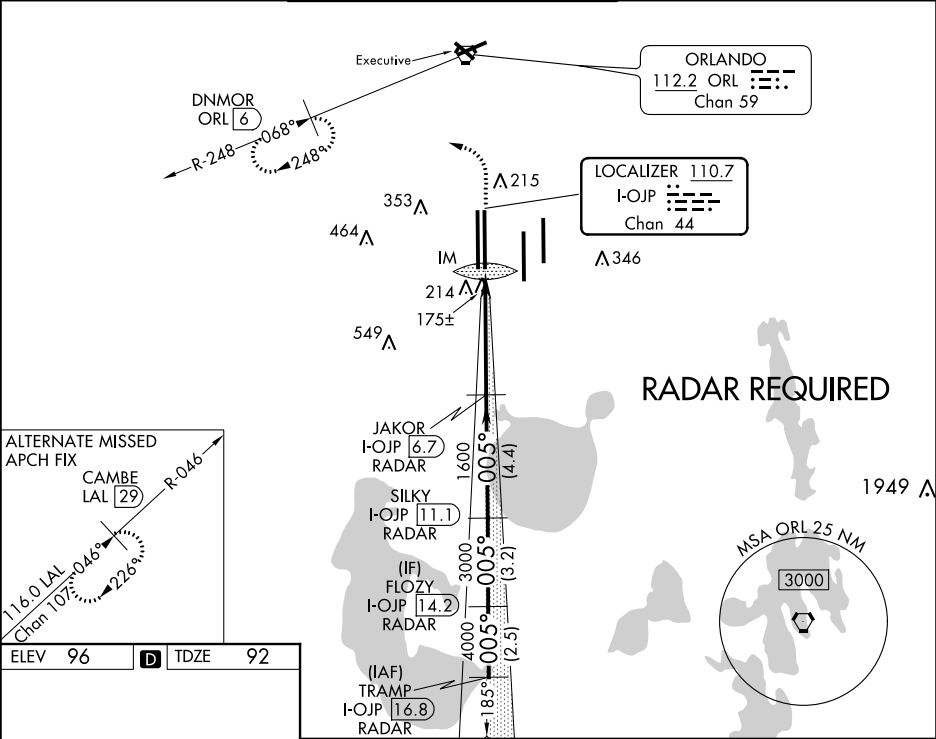
⚠

DME or RADAR required.
Simultaneous approach authorized.

ALSf-2

MISSED APPROACH: Climb to 500 then climbing left turn to 3000 on heading 309° and ORL R-248 to DNMOR/ORL 6 DME and hold, continue climb-in-hold to 3000.

D-ATIS ARR 121.25 DEP 120.525	ORLANDO APP CON 124.8 307.0	ORLANDO TOWER 124.3 (Rwys 18L-36R, 18R-36L) 118.45 (Rwys 17L-35R, 17R-35L)	253.5 253.5	GND CON 126.4 275.8 (East) 121.8 275.8 (West)	CLNC DEL 134.7 341.7	CPDLC
---	---------------------------------------	--	------------------------------	---	--	-------



ELEV 96

D

TDZE 92

HIRL all Rwys
REIL Rwy 36L
TDZ/CL Rwys 17L/R, 18R, 35L/R, and 36R

500 3000

hdg 309°
ORL R-248

DNMOR ORL 6

VGSI and ILS glidepath not coincident.
(VGSI Angle 3.00/TCH 70).

TRAMP I-OJP 16.8
RADAR

FLOZY I-OJP 14.2
RADAR

SILKY I-OJP 11.1
RADAR

JAKOR I-OJP 6.7
RADAR

IM 192

1600

3000

4000

5000

005°

GS 3.00°
TCH 56

CATEGORY	A	B	C	D
S-ILS 36R	CAT II RA106/12 100 DA 192			
S-ILS 36R	CAT III RVR 06			

CATEGORY II & III ILS - SPECIAL AIRCREW & AIRCRAFT CERTIFICATION REQUIRED