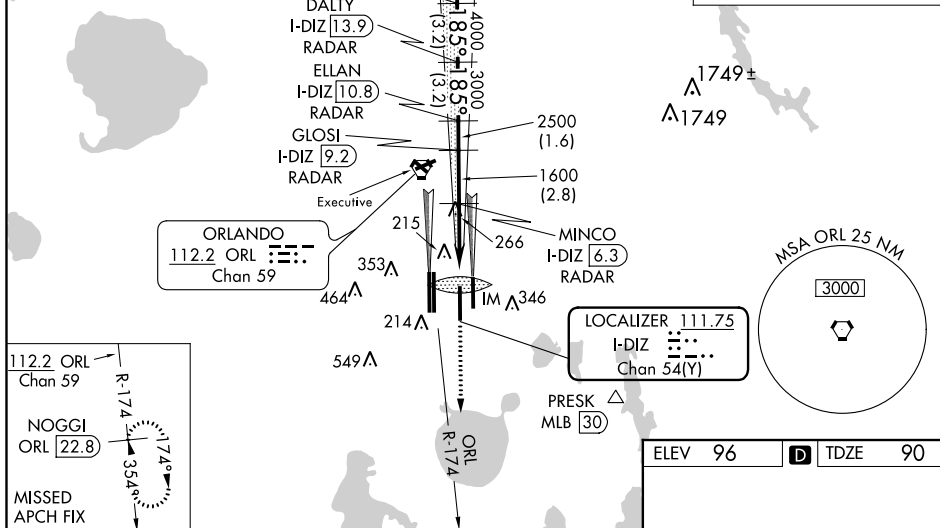


ILS RWY 17R (CAT II)
ORLANDO INTL (MCO)

ALSF-2

MISSED APPROACH: Climb to 3000 via ORL VORTAC R-174 to NOGGI/ORL 22.8 DME and hold.



VGS1 and ILS glidepath not coincident
(VGS1 Angle 3.00/TCH 71).

RATOY I-DIZ 25
RADAR

SACRO I-DIZ 20.2
RADAR

TACOT I-DIZ 17.1
RADAR

DALTY I-DIZ 13.9
RADAR

ELLAN I-DIZ 10.8
RADAR

GLOSI I-DIZ 9.2
RADAR

MINCO I-DIZ 6.3
RADAR

3000

ORL R-174

NOGGL ORL 22.8

6000 185° 185° 5000 4000 3000 2500 1600

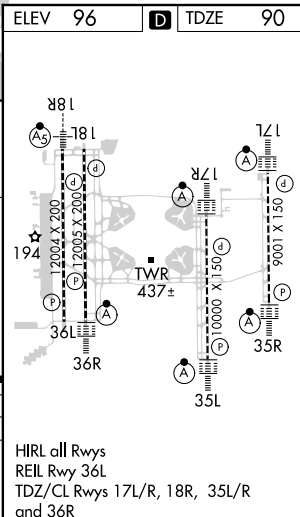
GS 3.00° TCH 53

4.8 NM 3.2 NM 3.2 NM 3.2 NM 1.6 NM 2.8 NM 4.5 NM 1050'

CATEGORY A B C D

S-ILS 17R RA 104/12 100 DA 190

CATEGORY II ILS - SPECIAL AIRCREW
& AIRCRAFT CERTIFICATION REQUIRED



SE-3, 03 DEC 2020 to 31 DEC 2020