

LOC/DME I-ARK

**110.95**

Chan 46(Y)

APP CRS

**185°**

Rwy Idg

**9000**

TDZE

**90**

Apt Elev

**96**

ILS RWY 17L (SA CAT I)

ORLANDO INTL (MCO)

RADAR required for procedure entry. DME or RADAR required.

ALSF-2

MISSED APPROACH: Climb to 500 then climbing left turn to 3000 on heading 100° and ORL VORTAC R-140 to PRESK INT/ORL 16.2 DME and hold, continue climb-in-hold to 3000.

D-ATIS

ARR **121.25**

DEP **120.525**

ORLANDO APP CON

**124.3**

**124.8 307.0**

ORLANDO TOWER

(Rwys 18L-36R, 18R-36L)

**253.5**

(Rwys 17L-35R, 17R-35L)

**253.5**

GND CON

**126.4 275.8** (East)

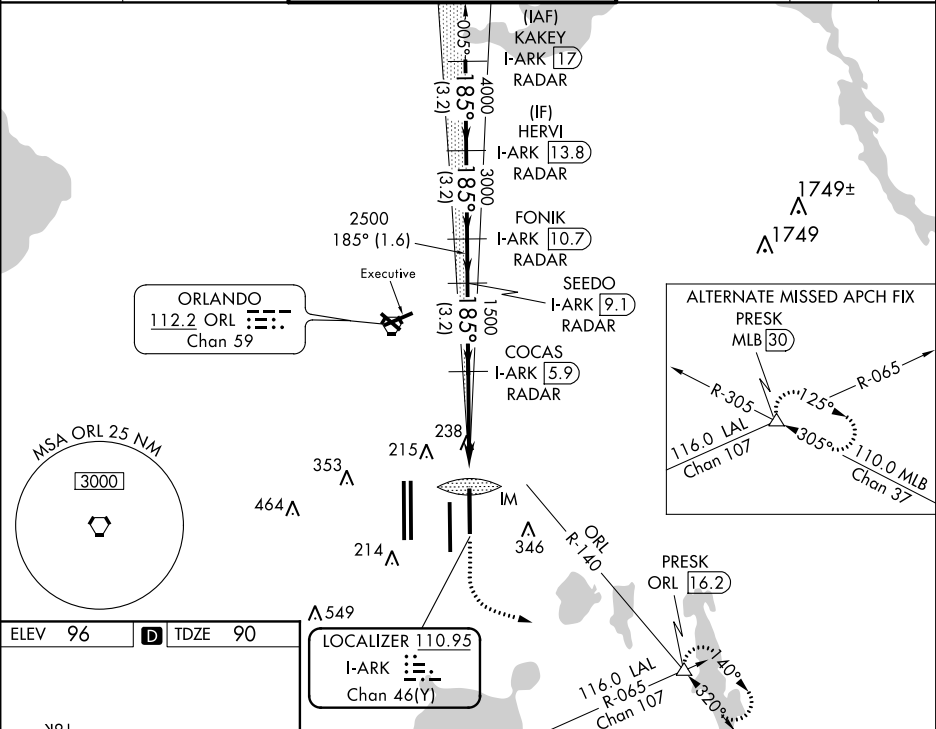
**121.8 275.8** (West)

CLNC DEL

**134.7**

**341.7**

CPDLC



500

3000

hdg 100°

ORL R-140

PRESK

VGSI and ILS glidepath not coincident (VGSI Angle 3.00/TCH 72).

KAKEY I-ARK 17

RADAR

HERVI I-ARK 13.8

RADAR

FONIK I-ARK 10.7

RADAR

SEEDO I-ARK 9.1

RADAR

COCAS I-ARK 5.9

RADAR

IM

1500

2500

3000

4000

GS 3.00°

TCH 55

4.3 NM

3.2 NM

1.6 NM

3.2 NM

3.2 NM

CATEGORY

A

B

C

D

S-ILS 17L

RA 145/14

150 DA 240

SA CATEGORY I ILS - SPECIAL AIRCREW & AIRCRAFT CERTIFICATION REQUIRED