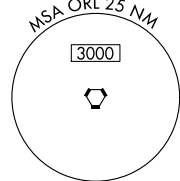


ILS RWY 17L (CAT II & III)
ORLANDO INTL (MCO)

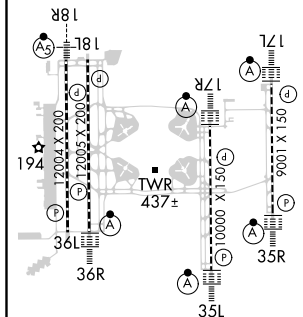
MISSED APPROACH: Climb to 500 then climbing left turn to 3000 on heading 100° and ORL VORTAC R-140 to PRESK INT/ORL 16.2 DME and hold, continue climb-in-hold to 3000.




	GND CON		CLNC DEL	CPDLC
53.5	126.4	275.8 (East)	134.7	
53.5	121.8	275.8 (West)	341.7	



LOCALIZER 110.95
I-ARK
Chn 46(Y)



HIRL all Rwys
REIL Rwy 36L
TDZ/CL Rwys 17L/R, 18R, 35L/R
and 36R

500 ↑	3000 hdg 100°	ORL R-140	PRESK △	VGSI and ILS glidepath not coincident (VGSI Angle 3.00/TCH 72).					KAKEY I-ARK (17) RADAR
				185° → 185° → 4000 3000 2500 1500 1500 4000 GS 3.00° TCH 55					
CATEGORY		A	B		C		D		
S-ILS 17L		CAT II		RA 101/12		100 DA 190			
S-ILS 17L		CAT III		RVR 600					

CATEGORY II & III ILS - SPECIAL AIRCREW
& AIRCRAFT CERTIFICATION REQUIRED