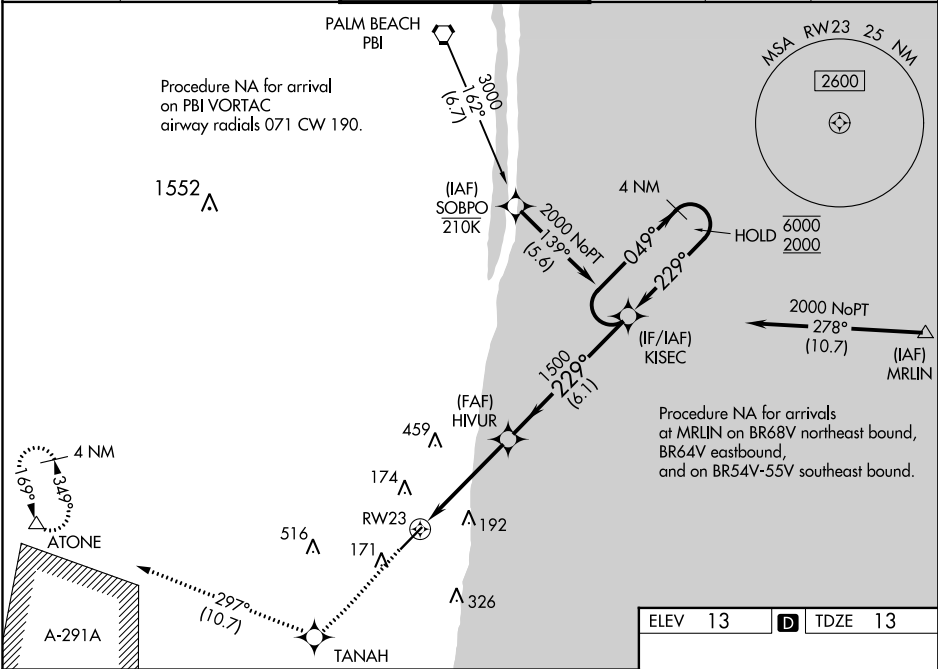
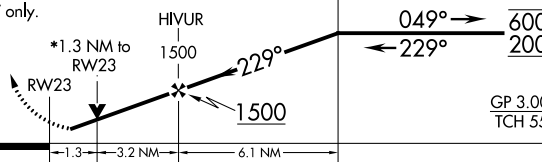


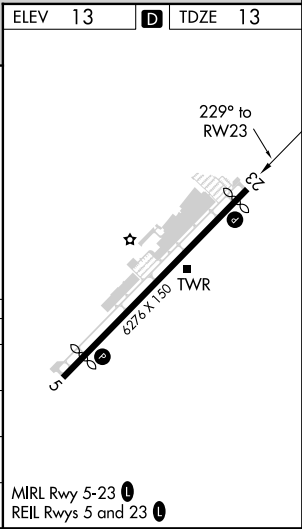
WAAS CH 42801 W23A	APP CRS 229°	Rwy Idg TDZE Apt Elev	5898 13 13
--	------------------------	-----------------------------	---------------------------------------

RNAV (GPS) Y RWY 23
BOCA RATON (BCT)

RNP APCH.				MISSED APPROACH: Climb to 2100 direct TANAHA and on track 297° to ATONE and hold.	
Rwy 23 helicopter visibility reduction below ¾ SM NA. For uncompensated Baro-VNAV systems, procedure NA below -15°C or above 54°C. In minimum visibility conditions, bright lights on highway ¼ mile north of airport may be mistaken as runway lights.					
AWOS-3 121.125	PALM BEACH APP CON 125.2 343.6	BOCA RATON TOWER ★ 118.425 (CTAF) 0	GND CON 121.8	CLNC DEL 121.8	CLNC DEL 127.35 (when twr closed)



2100 ↑	TANAH ✦	tr 297°	ATONE △	VGSI and RNAV glidepath not coincident (VGSI Angle 3.00/TCH 40).		4 NM Holding Pattern
*LNAV only.				KISEC		
						
CATEGORY		A		B	C	D
LPV	DA	263-7⁄8 250 (300-7⁄8)				
LNAV/ VNAV	DA	357-1 1⁄8 344 (400-1 1⁄8)				
LNAV MDA		480-1	467 (500-1)	480-1 3⁄8	467 (500-1 3⁄8)	
C CIRCLING		680-1	667 (700-1)	680-1 3⁄4 667 (700-1 3⁄4)	880-2 3⁄4 867 (900-2 3⁄4)	



SE-3, 03 DEC 2020 to 31 DEC 2020

SE-3, 03 DEC 2020 to 31 DEC 2020