

WAAS CH 45700 W23A	APP CRS 234°	Rwy Idg TDZE Apt Elev	4301 78 79
--	------------------------	-----------------------------	---------------------------------------

RNAV (GPS) RWY 23

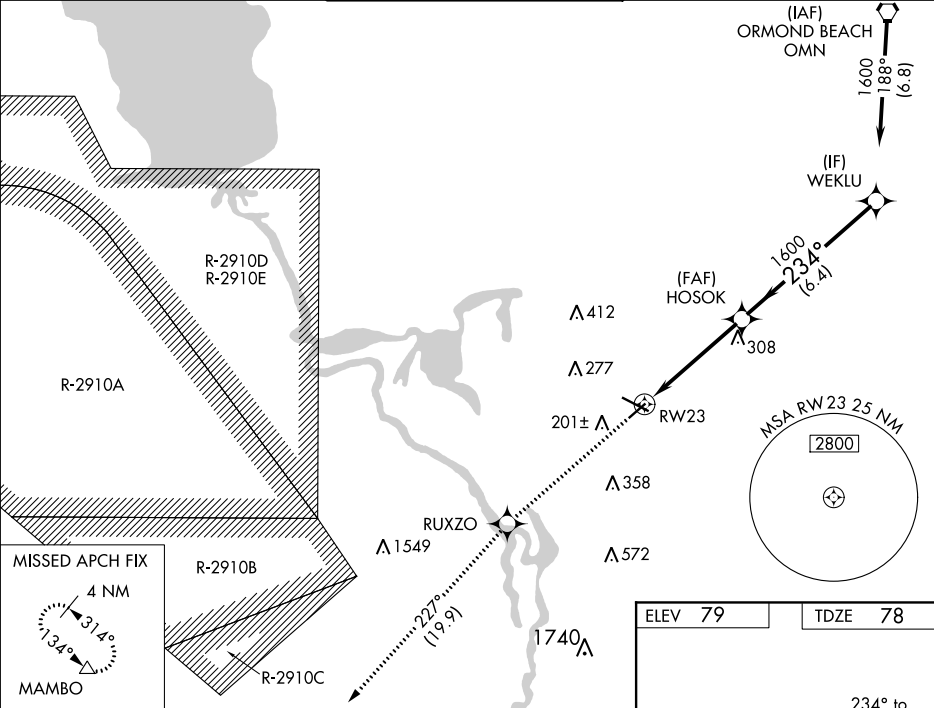
DELAND MUNI-SIDNEY H TAYLOR FIELD (DED)

RNP APCH.

For uncompensated Baro-VNAV systems, LNAV/VNAV NA below -15°C (5°F) or above 54°C (130°F).
Baro-VNAV and VDP NA when using Daytona Beach Intl altimeter setting. Rwy 23 helicopter visibility reduction below ¾ SM NA. When local altimeter setting not received, use Daytona Beach Intl altimeter setting and increase all DA 38 feet and all MDA 40 feet, increase LPV visibility ½ SM all Cats.

MISSED APPROACH:
Climb to 3000 direct
RUXZO and on track
227° to MAMBO
and hold.

AWOS-3 119.575	DAYTONA APP CON 125.35 322.3	UNICOM 123.075 (CTAF) 0
--------------------------	--	-----------------------------------



3000	RUXZO	tr	MAMBO	VGSI and RNAV glidepath not coincident (VGSI Angle 3.00/TCH 67°).
		227°		
*LNAV only.				
CATEGORY	A	B	C	D
LPV DA	374-1 296 (300-1)			
LNAV/VNAV DA	414-1¼ 336 (400-1¼)			
LNAV MDA	420-1 342 (400-1)			

