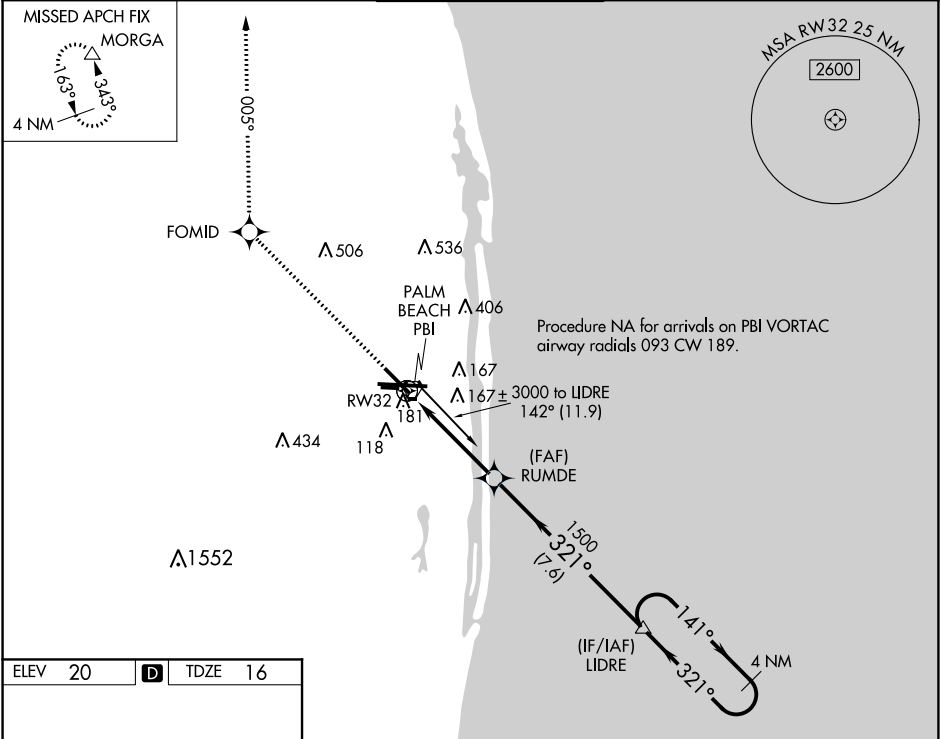


WAAS CH 62903 W32A	APP CRS 321°	Rwy Idg 6513 TDZE 16 Apt Elev 20
--	------------------------	---

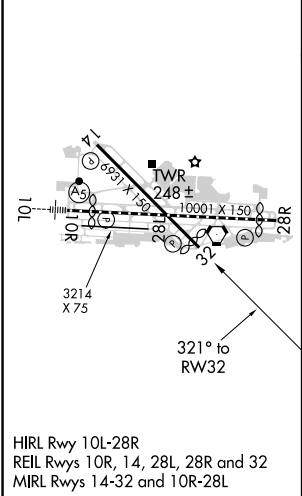
RNAV (GPS) Y RWY 32
PALM BEACH INTL (PBI)

⚠ For uncompensated Baro-VNAV systems, LNAV/VNAV NA below -15°C (5°F) or above 48°C (118°F). DME/DME RNP-0.3 NA. Helicopter visibility reduction below ¾ SM NA.	MISSED APPROACH: Climb to 2000 direct FOMID and via track 005° to MORG A and hold.
--	--

D-ATIS 123.75	PALM BEACH APP CON 128.3 317.4	PALM BEACH TOWER 119.1 257.8	GND CON 121.9 284.6	CLNC DEL 121.6 284.6
-------------------------	--	--	-------------------------------	--------------------------------



ELEV 20	D	TDZE 16
---------	----------	---------



2000	FOMID	tr 005°	MORG A	VGSI and RNAV glidepath not coincident (VGSI Angle 3.25/TCH 57).
				4 NM Holding Pattern
*LNAV only.		*1.1 NM to RW32		
RW32				
1.1 NM	3.3 NM	7.6 NM		
1500	321°	1500	321°	3000
141°				
GP 3.00° TCH 57				
CATEGORY	A	B	C	D
LPV DA	336-1	320 (400-1)		
LNAV/VNAV DA	431-1½	415 (500-1½)		
LNAV MDA	440-1 424 (500-1)	440-1¼ 424 (500-1¼)		
C CIRCLING	560-1 540 (600-1)	680-1¾ 660 (700-1¾)	780-2½ 760 (800-2½)	

SE-3, 03 DEC 2020 to 31 DEC 2020

SE-3, 03 DEC 2020 to 31 DEC 2020