

APP CRS
141°

Rwy Idg
TDZE
17

6000
Apt Elev
19

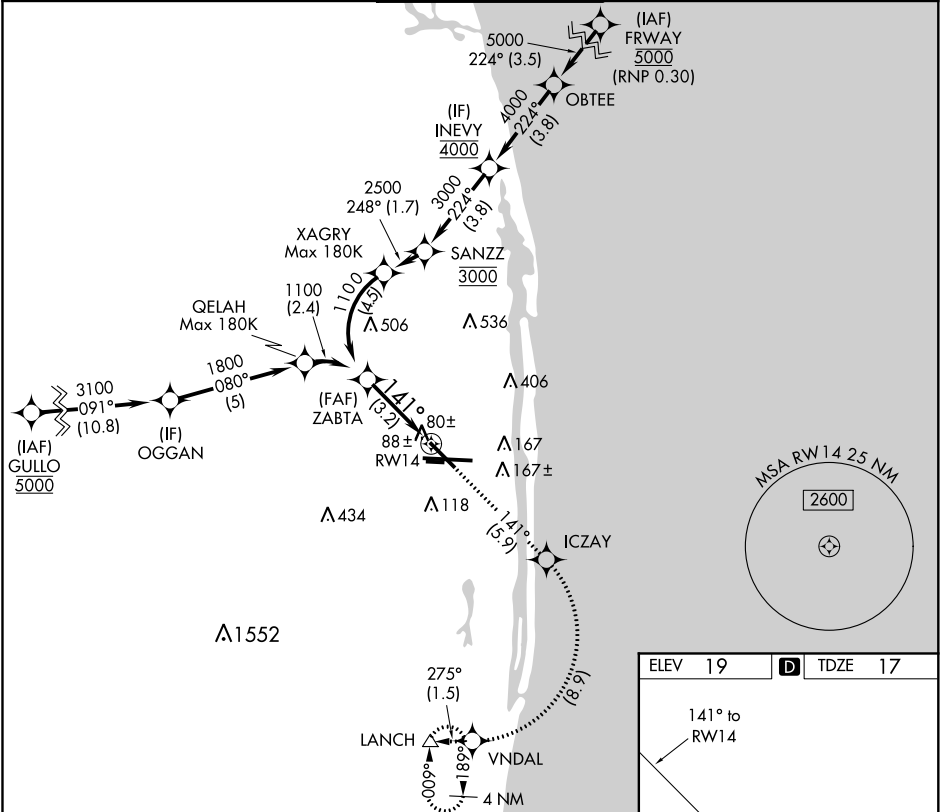
RNAV (RNP) Z RWY 14

PALM BEACH INTL (PBI)

RF and GPS required. For uncompensated Baro-VNAV systems, procedure NA below 3°C (38°F) or above 47°C (118°F). When VGSi inop, procedure NA at night.

MISSED APPROACH: (Do not exceed 200 KIAS until VNDAL) Climb to 2000 on track 141° to ICZAY and right turn to VNDAL and on track 275° to LANCH and hold.

D-ATIS 123.75	PALM BEACH APP CON 128.3 317.4	PALM BEACH TOWER 119.1 257.8	GND CON 121.9 284.6	CLNC DEL 121.6 284.6
-------------------------	--	--	-------------------------------	--------------------------------



See planview for multiple IF locations.

Procedure Turn NA

GP 3.00° TCH 51

2000 tr 141°

ICZAY

VNDAL

LANCH

VGSi and RNAV glidepath not coincident (VGSi Angle 3.00/TCH 66).

1100 141°

3.2 NM

RW14

CATEGORY	A	B	C	D
RNP 0.11 DA		320-1	303 (400-1)	
RNP 0.30 DA		364-1¼	347 (400-1¼)	

AUTHORIZATION REQUIRED

ELEV 19

TDZE 17

141° to RW14

101

100

3214 X 75

TWR 248±

10001 X 150

28R

HIRL Rwy 10L-28R

REIL Rwys 10R, 14, 28L, 28R and 32

MIRL Rwys 14-32 and 10R-28L