

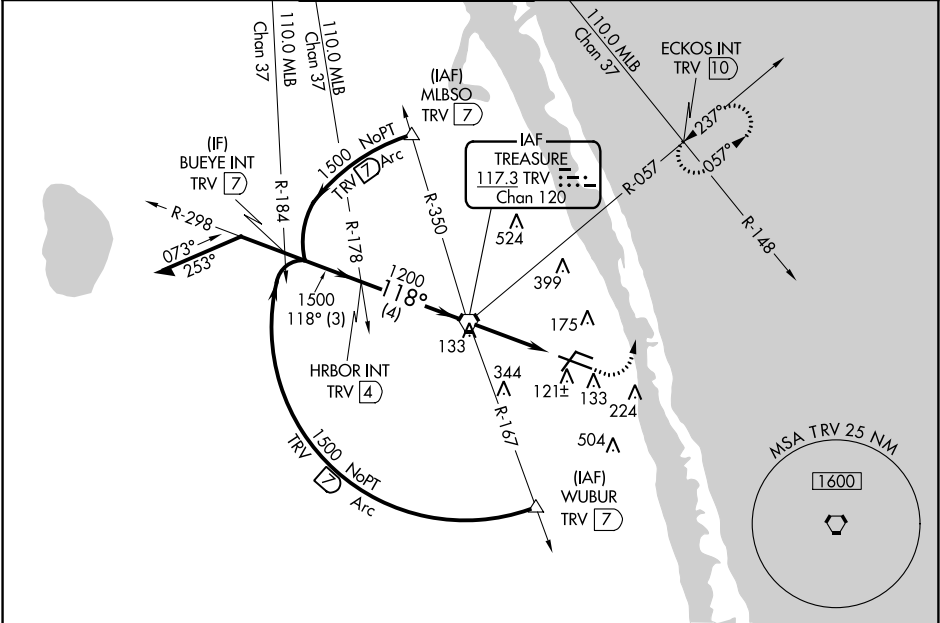
VORTAC TRV 117.3 Chan 120	APP CRS 118°	Rwy Idg TDZE 23 Apt Elev 24	7314
---	------------------------	---	-------------

VOR RWY 12R
VERO BEACH RGNL (VRB)

⚠ Circling to Rwy 30R NA at night. When local altimeter setting not received, use Fort Pierce altimeter setting and increase all MDAs 40 feet.

MISSED APPROACH: Climb to 500 then climbing left turn to 2000 heading 360° and on TRV VORTAC R-057 to ECKOS INT/TRV 10 DME and hold.

ATIS 120.575	PALM BEACH APP CON 123.625 225.4 (N)	VERO BEACH TOWER ★ 126.3 (CTAF) 0	GND CON 127.45	CLNC DEL 134.975	UNICOM 122.95
------------------------	--	---	--------------------------	----------------------------	-------------------------



ELEV 24 **D** TDZE 23

118° 3.5 NM from FAF

12R, 12L, 75, 30R, 30L, 30R, 30L, 30R

TWR 143

MIRL Rwy 4-22, 12R-30L, and 12L-30R **0**
REIL Rwy 4, 12R, 22 and 30L **0**

FAF to MAP 3.5 NM

Knots	60	90	120	150	180
Min:Sec	3:30	2:20	1:45	1:24	1:10

Remain within 10 NM

298°

1600

118°

1500

1500

1200

TRV VORTAC

500

2000

TRV R-057

ECKOS INT

3.07° TCH 42

TRV 2.4

TRV 3.5

3 NM

4 NM

2.4 NM

1.1 NM

CATEGORY	A	B	C	D
S-12R		400-1	377 (400-1)	
CIRCLING	560-1	536 (600-1)	560-1½ 536 (600-1½)	660-2 636 (700-2)

SE-3, 03 DEC 2020 to 31 DEC 2020

SE-3, 03 DEC 2020 to 31 DEC 2020