

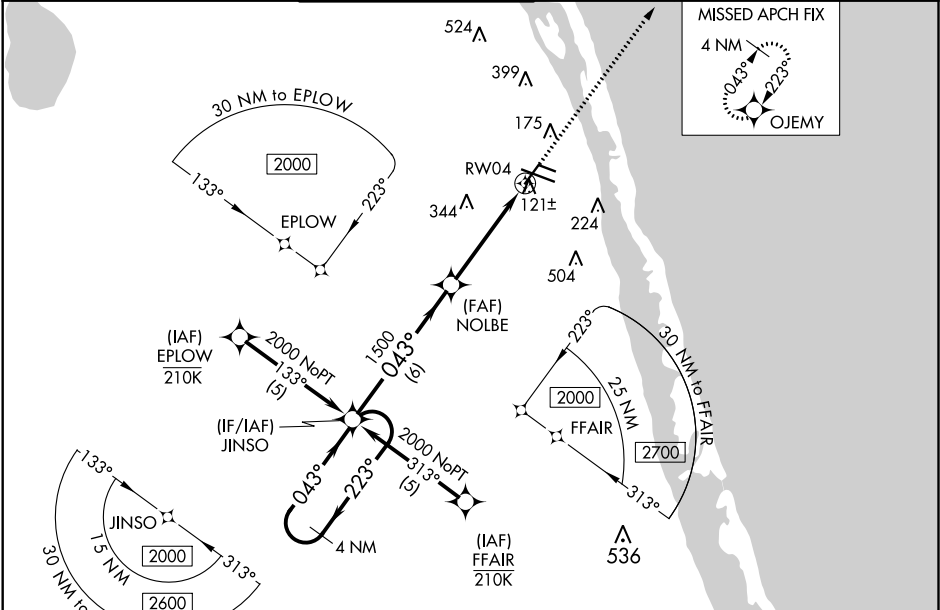
WAAS CH <b>61311</b> <b>W04A</b>	APP CRS <b>043°</b>	Rwy Idg TDZE <b>24</b> Apt Elev <b>24</b>	<b>4974</b>
--	------------------------	---	-------------

RNAV (GPS) RWY 4  
VERO BEACH RGNL (VRB)

**⚠** Circling to Rwy 30R NA at night. For uncompensated Baro-VNAV systems, LNAV/VNAV NA below 0°C (32°F) or above 54°C (130°F). DME/DME RNP-0.3 NA. When local altimeter setting not received, use Fort Pierce altimeter setting and increase all DA 23 feet and MDA 40 feet, increase LNAV/VNAV all Cats visibility 1/8 mile, LNAV Cat C/D visibility 1/4 mile and Circling Cat D visibility 1/4 mile. Baro-VNAV and VDP NA when using Fort Pierce altimeter setting. Rwy 4 helicopter visibility reduction below 3/4 SM NA.

MISSED APPROACH:  
Climb to 2000 direct  
OJEMY and hold.

ATIS <b>120.575</b>	PALM BEACH APP CON <b>123.625 225.4 (N)</b>	VERO BEACH TOWER ★ <b>126.3 (CTAF) 0</b>	GND CON <b>127.45</b>	CLNC DEL <b>134.975</b>	UNICOM <b>122.95</b>
------------------------	--	---	--------------------------	----------------------------	-------------------------



ELEV 24		D		TDZE 24	
4 NM Holding Pattern		JINSO		2000 OJEMY	
2000 ← 223°		043° →		043°	
GP 3.00°		TCH 40		*LNAV only.	
6 NM		3.2 NM		1.3	
CATEGORY	A	B	C	D	
LPV DA	297-7/8		273 (300-7/8)		
LNAV/VNAV DA	355-1 1/8		331 (400-1 1/8)		
LNAV MDA	480-1	456 (500-1)	480-1 3/8	456 (500-1 3/8)	
CIRCLING	560-1	536 (600-1)	560-1 1/2	660-2	
			536 (600-1 1/2)	636 (700-2)	

SE-3, 03 DEC 2020 to 31 DEC 2020

SE-3, 03 DEC 2020 to 31 DEC 2020