

WAAS CH 69411 W30A	APP CRS 298°	Rwy Idg 7276 TDZE 22 Apt Elev 24
----------------------------------------	------------------------	-------------------------------------------------------------

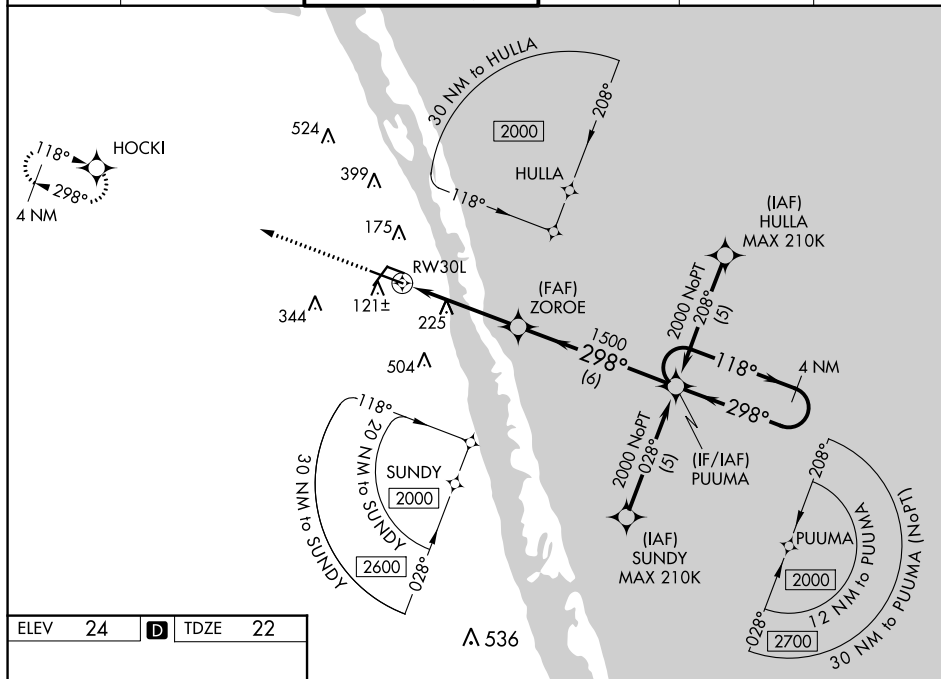
RNAV (GPS) RWY 30L

VERO BEACH RGNL (VRB)

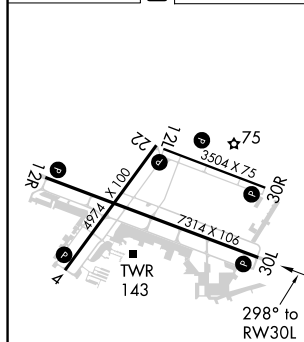
- ⚠** Circling to Rwy 30R NA at night. Baro-VNAV NA when using Fort Pierce altimeter setting. For uncompensated Baro-VNAV systems, LNNAV/VNNAV NA below 0°C (32°F) or above 54°C (130°F). DME/DME RNP-0.3 NA. VDP NA when using Fort Pierce altimeter setting. When local altimeter setting not received, use Fort Pierce altimeter setting and increase all DA 23 feet and all MDA 40 feet and increase LNNAV/VNNAV all Cats visibility 1/8 mile LNNAV Cats C/D and Circling visibility Cats C/D 1/4 mile.

MISSED APPROACH:
Climb to 2000 direct
HOCKI and hold.

ATIS 120.575	PALM BEACH APP CON 123.625 225.4	VERO BEACH TOWER ★ 126.3 (CTAF) 0	GND CON 127.45	CLNC DEL 134.975	UNICOM 122.95
-----------------	-------------------------------------	--------------------------------------	-------------------	---------------------	------------------



ELEV	24	D	TDZE	22
------	----	----------	------	----



MIRL Rwys 4-22, 12R-30L,
and 12L-30R **L**
REIL Rwys 4, 12R, 22 and 30L **L**

[illegible]