

## ILS Z or LOC Z RWY 30

EGLIN AFB/DESTIN-FT WALTON BEACH(KVPS)

ALSF-1

† MISSED APPROACH: Climb straight ahead to 600 then climbing left turn to 2200 direct TUFER DWG R-180/12 DME and hold.

WARRINGTON  
Chan 2 DWG [5.4]

SHYPP  
DWG [5.4]  
/RADAR

LOCALIZER 109.1  
I-VPS [5.4]

339

245

210

353

120°

300°

TEXXS  
DWG [12]

(IAF) GINTY  
DWG [17]

120°

IR-131

DWG [17]

R-121

180°

265K

DWG [20]

R-180

360°

10 NM

ENROUTE FACILITIES

(IAF) TUFER  
DWG [12]

DWG [12] Arc

Procedure not usable at times due to restricted area activity.

Aircraft holding in excess of 230 KIAS require RADAR monitoring.

DME or RADAR REQUIRED  
(For Localizer Approach)

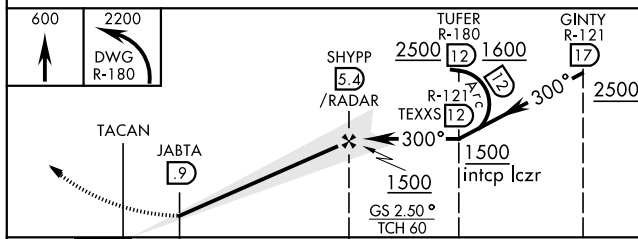
MSA DWG 25 NM  
1800

ELEV	84	THRE	40
------	----	------	----

## DME or RADAR REQUIRED

(For Localizer Approach)

EMERG SAFE ALT 100 NM 3600



CATEGORY	A	B	C	D	E
S-ILS 30 *	249/24		200	(200-½)	
S-LOC 30 **	440/24	391 (400-½)	440/35	391	(400-½)
CIRCLING	660-1	576 (600-1)	760-2 676 (700-2)	760-2¼ 676 (700-2¼)	760-2½ 676 (700-2½)

ELEV

84

THRE

49

HIRL all Rwy  
 †† Rwy 19 apch lgt 1500' nonstandard.

FAF to MAP 4.5 NM

Knots	60	90	120	150	180	200
Min:Sec	4:30	3:00	2:15	1:48	1:30	1:21

Amdt 3 26MAY16

## ILS Z or LOC Z RWY 30

SE-3, 03 DEC 2020 to 31 DEC 2020