

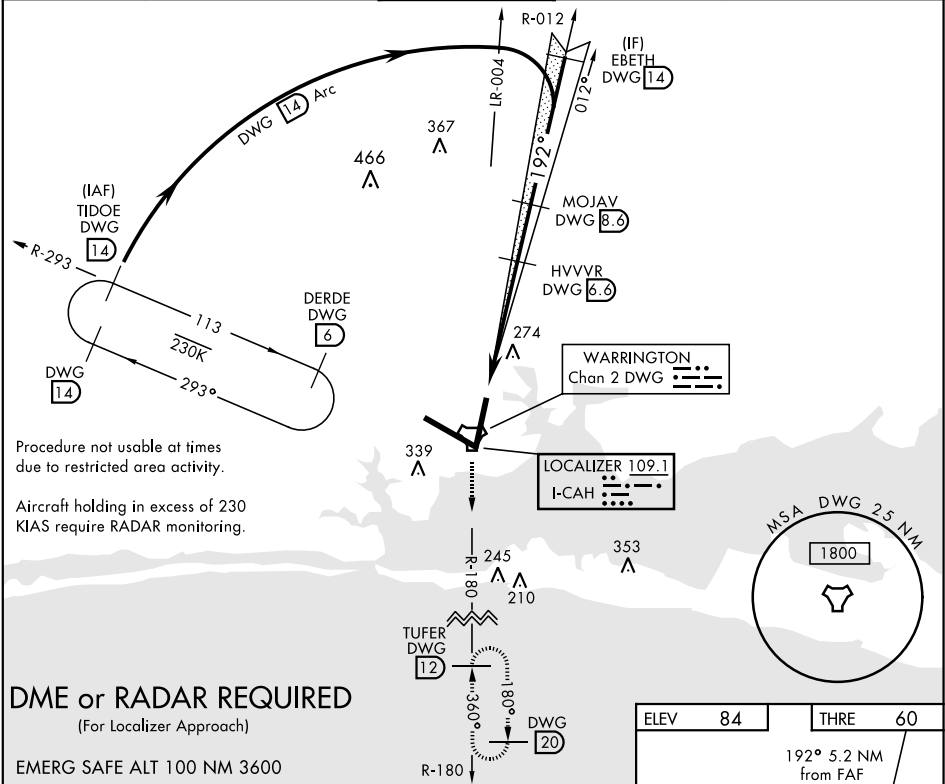
VALPARAISO, FLORIDA

ILS X or LOC X RWY 19

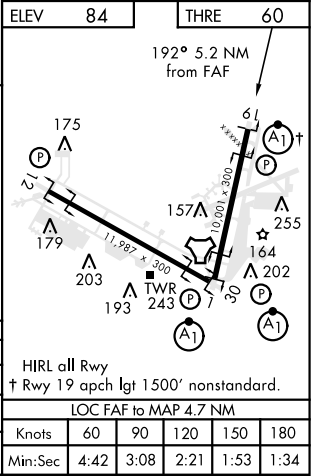
LOC I-CAH 109.1	APCH CRS 192°	Rwy ldg 10,001 THRE 60 Arprt Elev 84
---------------------------	-------------------------	---

AL-436 [USAF] EGLIN AFB/DESTIN-FT WALTON BEACH (KVPS)

* When ALS inop, increase CAT ABCDE RVR to 40 and vis to ¾ mile. ** When ALS inop, increase CAT AB RVR to 55 and vis to 1 mile, CAT CDE RVR to 60 and vis to 1 ½ miles.			ALSF-1 	MISSED APPROACH: Climb to 2200 on DWG R-180 to 12 DME/TUFER and hold.	
ATIS ★ 134.625 273.5	EGLIN APP CON 125.1 281.45 271°-089° 132.1 360.6 090°-270°	EGLIN TOWER 118.2 353.65	GND CON 121.8 335.8	CLNC DEL 127.7 377.2	



2200 DWG R-180		TUFER DWG 12					
TACAN		PURKR 1.9	GS 2.80° TCH 59	HVVVR 6.6	MOJAV R-012 8.6	EBETH 14	TIDOE R-293 14
5 NM		4.7 NM		1700	192°	Intcp Lczt 3000	3000
CATEGORY		A	B	C	D	E	
S-ILS 19 *		260/24		200	(200-½)		
S-LOC 19 **		480/24	420 (400-½)	480/40	420	(400-¾)	
CIRCLING		660-1	576 (600-1)	760-2 676 (700-2)	760-2¼ 676 (700-2¼)	760-2½ 676 (700-2½)	



VALPARAISO, FLORIDA

Amtd 4 17OCT13

30°29'N-86°32'W

EGLIN AFB/DESTIN-FT WALTON BEACH (KVPS)

ILS X or LOC X RWY 19

SE-3, 03 DEC 2020 to 31 DEC 2020

SE-3, 03 DEC 2020 to 31 DEC 2020