

VALPARAISO, FLORIDA

ILS W or LOC W RWY 19

LOC/DME I-CAH <b>109.1</b> Chan <b>28</b>	APCH CRS <b>192°</b>	Rwy Idg <b>10,001</b> THRE <b>60</b> Arprt Elev <b>84</b>
---	-------------------------	---

AL-436 [USAF]

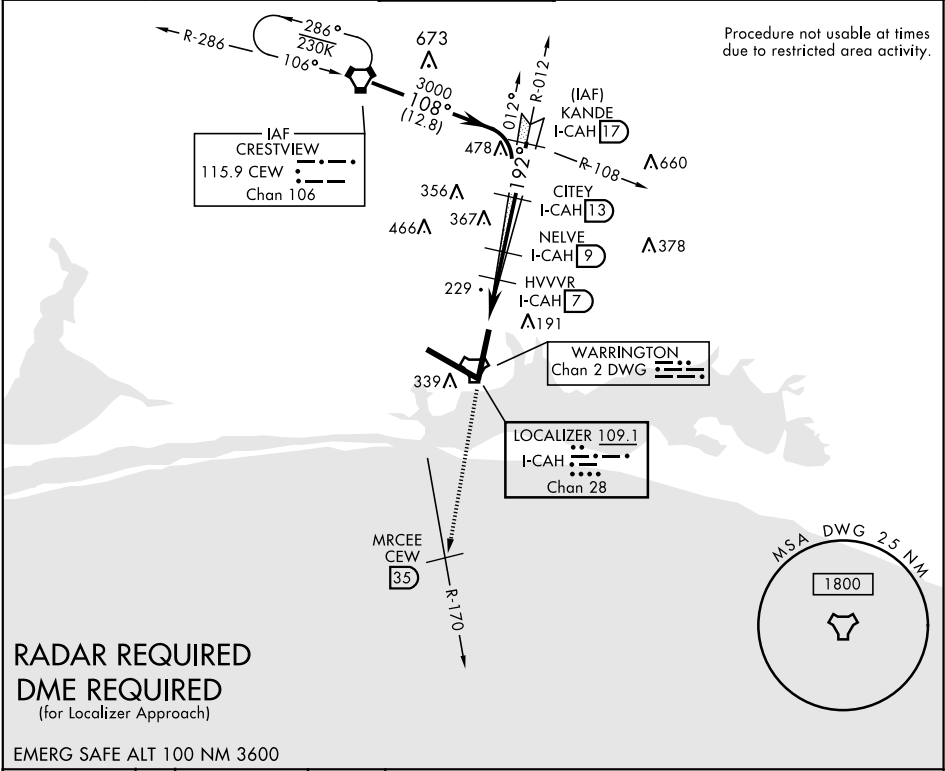
EGLIN AFB/DESTIN-FT WALTON BEACH(KVPS)

\* When ALS inop, increase CAT ABCDE RVR to 40 and vis to ¾ mile.  
\*\* When ALS inop, increase CAT AB RVR to 55 and vis to 1 mile, CAT CDE RVR to 60 and vis to 1½ miles.



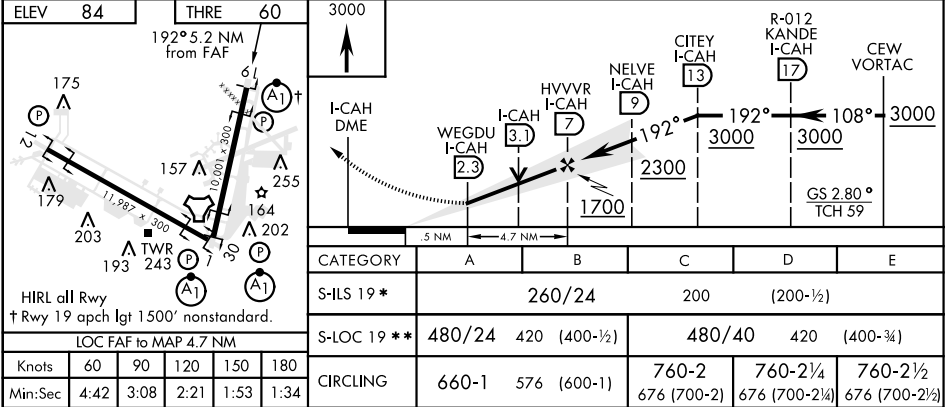
MISSED APPROACH: Climb straight ahead to 3000 to CEW R-170/35 DME (MRCEE), then as directed by ATC.

ATIS ★ <b>134.625 273.5</b>	EGLIN APP CON <b>125.1 281.45 271°-089°</b> <b>132.1 360.6 090°-270°</b>	EGLIN TOWER <b>118.2 353.65</b>	GND CON <b>121.8 335.8</b>	CLNC DEL <b>127.7 377.2</b>
--------------------------------	--	------------------------------------	-------------------------------	--------------------------------



**RADAR REQUIRED**  
**DME REQUIRED**  
(for Localizer Approach)

EMERG SAFE ALT 100 NM 3600



VALPARAISO, FLORIDA

30°29'N-86°32'W

EGLIN AFB/DESTIN-FT WALTON BEACH(KVPS)

Amtd 5 17OCT13

ILS W or LOC W RWY 19

SE-3, 03 DEC 2020 to 31 DEC 2020

SE-3, 03 DEC 2020 to 31 DEC 2020