

TACAN	DWG	APCH CRS	Rwy ldg
Chan	2	313°	11,987
		THRE	49
		Arprt Elev	84

JAL-436 [USAF]

EGLIN AFB/DESTIN-FT WALTON BEACH(KVPS)

ALSIF-1

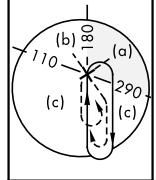


MISSED APPROACH: Climbing left turn to 2200 direct
TUFER DWG R-180/12 DME and hold.

ATIS ★	EGLIN APP CON	EGLIN TOWER	GND CON	CLNC DEL
134.625 273.5	125.1 281.45 271°-089° 132.1 360.6 090°-270°	118.2 353.65	121.8 335.8	127.7 377.2

Aircraft holding in excess of 230 KIAS
require RADAR monitoring.

Procedure not usable at times
due to restricted area activity.



645
Λ

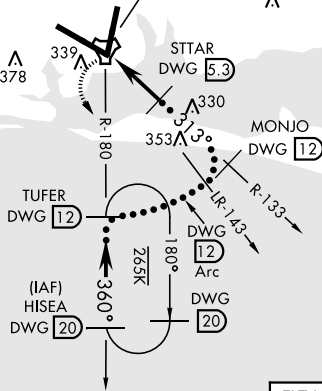
308
Λ

WARRINGTON
Chan 2 DWG

379
Λ

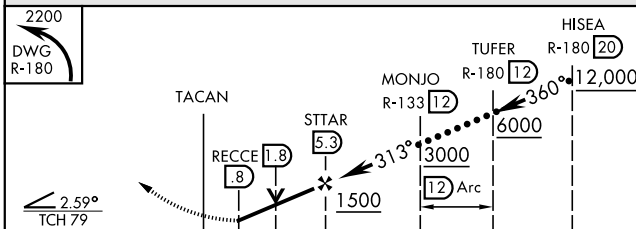
339
Λ

749
Λ

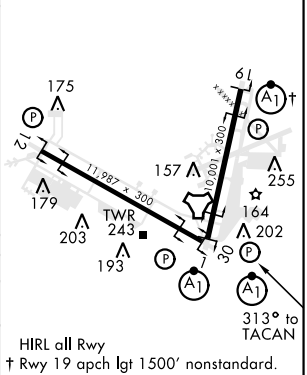


EMERG SAFE ALT 100 NM 3600

ELEV	84	THRE	49
------	----	------	----



CATEGORY	A	B	C	D	E
S-30	520/24 471 (500-½)		520/50 471 (500-1)		
CIRCLING	660-1 576 (600-1)		760-2 676 (700-2)	760-2¼ 676 (700-2¼)	760-2½ 676 (700-2½)



VALPARAISO, FLORIDA

30°29'N-86°32'W

EGLIN AFB/DESTIN-FT WALTON BEACH(KVPS)

Amdt 2 05MAR15

HI-TACAN RWY 30