

TAMPA, FLORIDA

RNAV (GPS) RWY 4

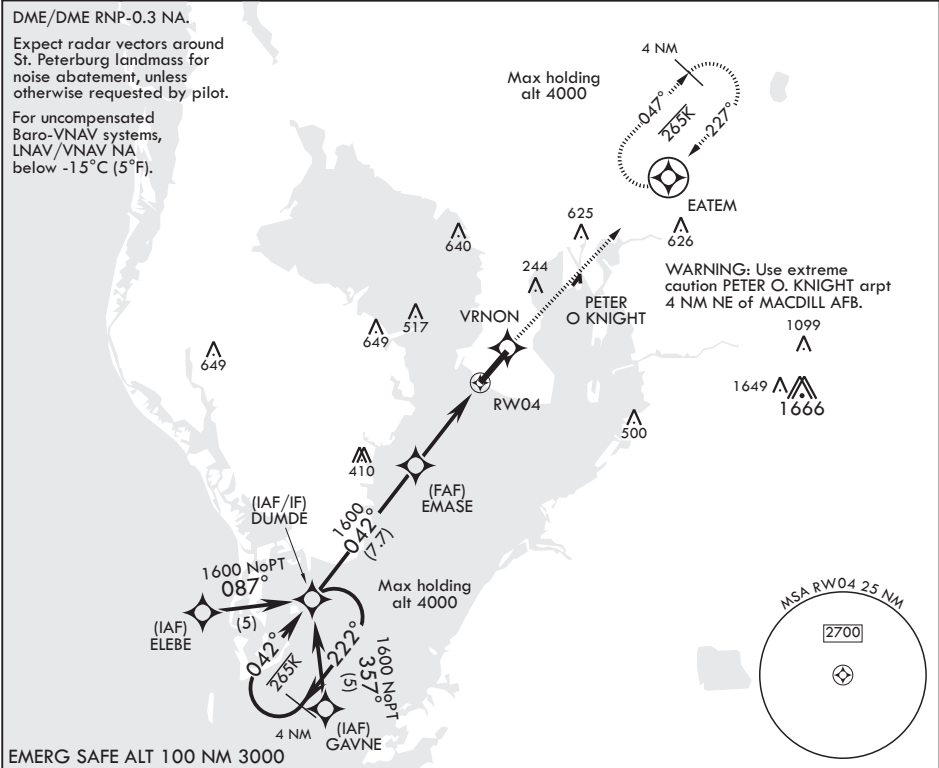
APCH CRS	Rwy Idg	11,421
042°	TDZE	10
	Arpt Elev	14

AL-418 (USAF)

MACDILL AFB (KMCF)

* When ALS inop, increase RVR to 45 and vis to 7/8 mile. ** When ALS inop, increase CAT A8 RVR to 55 and vis to 1 mile, CAT CDE RVR to 60 and vis to 1 1/8 miles. *** Circling not authorized NW of Rwy 4-22.	ALSF-1 	MISSED APPROACH: Climb to 1700 direct VRNON, then via 047° track to EATEM and hold.
---	------------	---

ATIS 133.825 270.1	TAMPA APP CON 124.95 354.0	TOWER 120.175 294.7	GND CON 118.575 275.8
-----------------------	-------------------------------	------------------------	--------------------------



	1700	VRNON	tr 047°	EATEM	ELEV 14	TDZE 10
	DUMDE	EMASE	RW04			
	1600	1600	1600			
GP 3.00°	042°	042°	042°			
TCH 55						
CATEGORY	A	B	C	D	E	
LNAV/VNAV DA*	319/24	309	(400-1/2)			
LNAV MDA**	420/24 410 (500-1/2)	420/40	410 (500-3/4)			
CIRCLING***	500-1 486 (500-1)	540-1 526 (600-1)	540-1 1/2 526 (600-1 1/2)	580-2 566 (600-2)	1020-3 1006 (1100-3)	

TAMPA, FLORIDA

27°51'N - 82°31'W

MACDILL AFB (KMCF)

Amdt 3 18JUN20

RNAV (GPS) RWY 4

SE-3, 03 DEC 2020 to 31 DEC 2020

SE-3, 03 DEC 2020 to 31 DEC 2020